

WAAS CH 77501 W21A	APP CRS 207°	Rwy Idg 5200 TDZE 1540 Apt Elev 1540
--	------------------------	---

RNAV (GPS) RWY 21
VENANGO RGNL (FKL)

VFNANGO RGNI (FKL)

RNP APCH.

T For uncompensated Baro-VNAV systems, LNAV/VNAV NA below -18°C (0°F) or above 45°C (114°F). Circling Rwy 12 NA at night. For inop ALS, increase LPV all Cats visibility to 7/8 SM and LNAV Cats C/D visibility to 1 SM.

MALSR



MISSED APPROACH:
Climb to 3400 direct
BUVCA and hold.

AWOS-3PT

118.175

YOUNGSTOWN APP CON ★

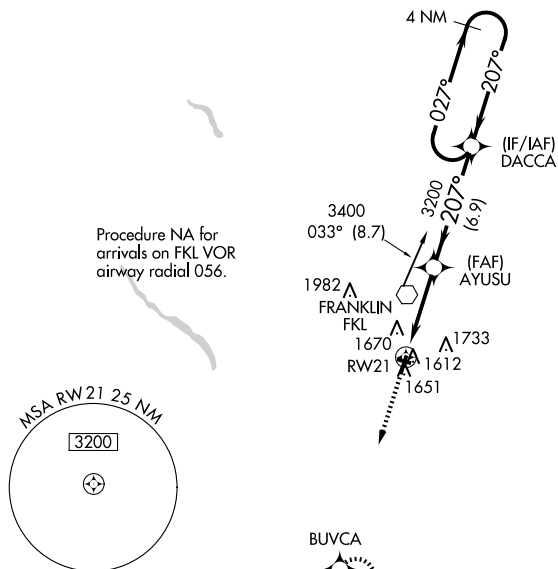
126.25 322.3

CLNC DEL

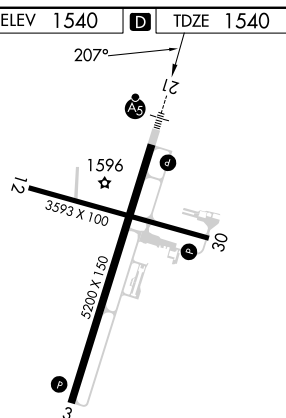
126.25

UNICOM

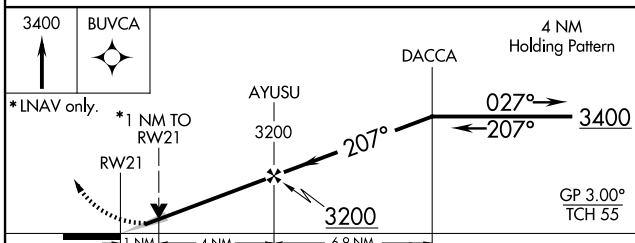
122.7 (CTAF)



Procedure NA for arrivals on FKL VOR airway radial 056.

2170_A

MIRL Rwy 12-30 **L**
HIRL Rwy 3-21 **L**



CATEGORY		A		B		C		D	
LPV	DA			1803- $\frac{1}{2}$		263 (300- $\frac{1}{2}$)			
INAV/ VNAV	DA			1901- $\frac{3}{4}$		361 (400- $\frac{3}{4}$)			
INAV	MDA	1900- $\frac{1}{2}$ 360 (400- $\frac{1}{2}$)				1900- $\frac{5}{8}$ 360 (400- $\frac{5}{8}$)			
CIRCLING		1960-1 $\frac{1}{4}$ 420 (500-1 $\frac{1}{4}$)		2000-1 $\frac{1}{4}$ 460 (500-1 $\frac{1}{4}$)		2040-1 $\frac{1}{2}$ 500 (500-1 $\frac{1}{2}$)		2100-2 560 (600-2)	