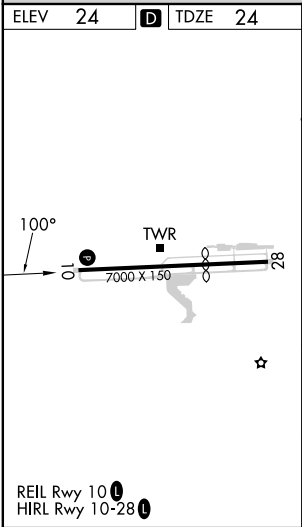
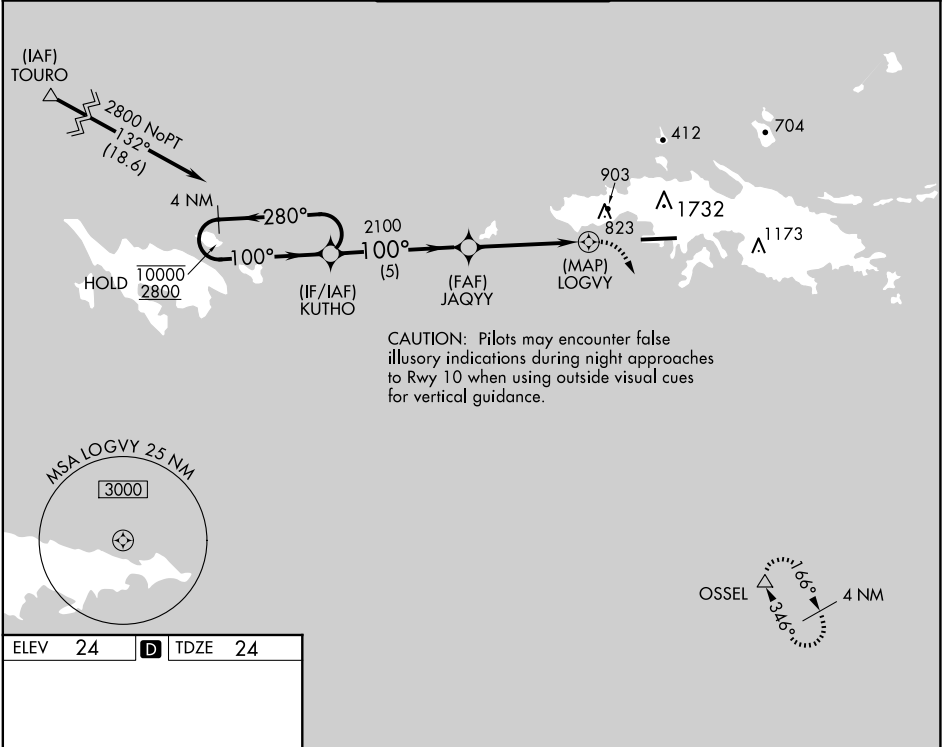


APP CRS	Rwy Idg	6892
	TDZE	24
	Apt Elev	24

RNAV (GPS) RWY 10  
CYRIL E KING (STT)(TIST)

RNP APCH - GPS.		MISSED APPROACH: Climbing right turn to 2800 direct OSSEL and hold. * Missed approach requires minimum climb of 411 feet per NM to 1900 for Category C/D aircraft.
	Circling NA at night. Circling NA north of Rwy 10-28.	
	Cat A and B missed approach climb gradient is standard.	

ATIS 124.0	SAN JUAN CENTER 128.65 279.6	ST. THOMAS TOWER★ 118.8 (CTAF) 0 257.6 118.1 (NORTH OF ISLAND)	GND CON 121.9	UNICOM 122.95
---------------	---------------------------------	--	------------------	------------------



4 NM Holding Pattern		VGSi and descent angles not coincident (VGSi Angle 3.00/TCH 71).		2800	OSSEL
KUTHO		JAQYY		LOGVY	
10000 2800		2100		1.4 NM to LOGVY	
100°		100°		3.05° TCH 56	
5 NM		2.9 NM		1.4 1.9	
CATEGORY	A	B	C	D	
RNAV MDA*	NA		1180-3	1156 (1200-3)	
RNAV MDA	1180-2½	1156 (1200-2½)	1560-3	1536 (1600-3)	
CIRCLING	1180-2½	1156 (1200-2½)	1560-3	1536 (1600-3)	