

APP CRS  
**182°**

Rwy Ldg  
TDZE  
**585**

Apt Elev  
**585**

**RNAV (GPS) RWY 18**

MORRIS MUNI/JAMES R WASHBURN FLD (C09)

RNP APCH - GPS.

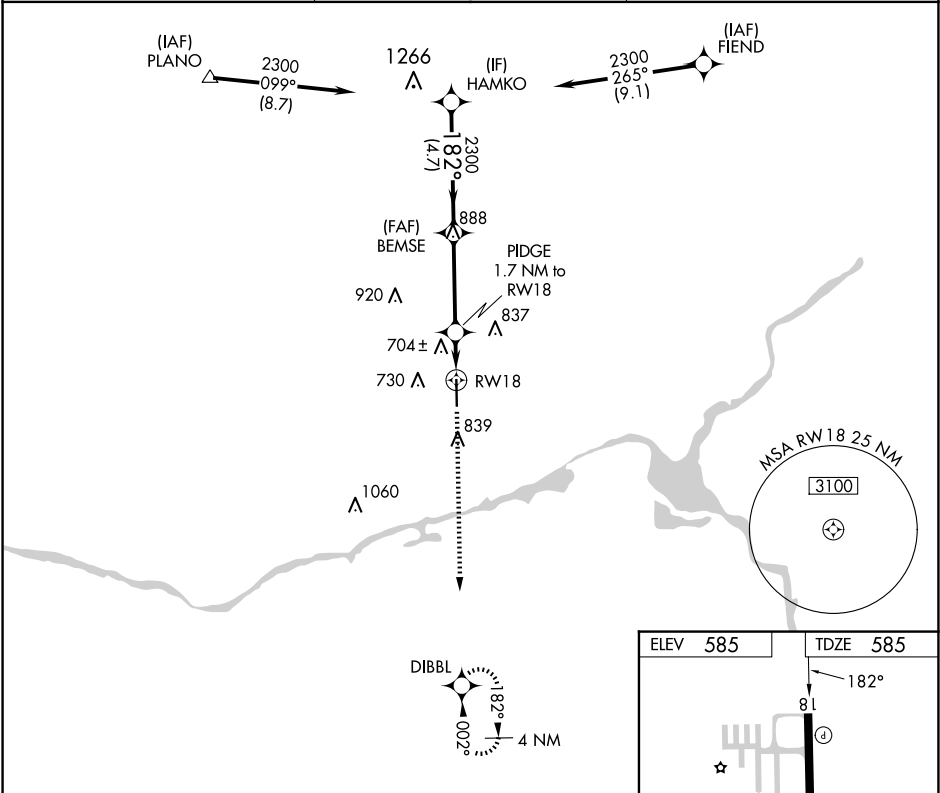
▼

▲

Rwy 18 helicopter visibility reduction below ¾ SM NA. VDP NA when using JOT altimeter setting. When local altimeter setting not received, use JOT altimeter setting and increase all MDAs 40 feet and LNAV visibility Cat C ½ SM.

MISSED APPROACH: Climb to 2200 direct DIBBL and hold.

AWOS-3 <b>118.175</b>	CHICAGO APP CON <b>119.35 354.075</b>	UNICOM <b>122.8 (CTAF) 0</b>
--------------------------	------------------------------------------	---------------------------------



ELEV 585		TDZE 585	
182°		81	
2200		DIBBL	
HAMKO		BEMSE	
2300		2300	
182°		3.00°	
4.7 NM		3.6 NM	
1160		1 NM to RW18	
CATEGORY		D	
LNAV MDA		NA	
CIRCLING		NA	
1020-1		1140-1½	
435 (500-1)		555 (600-1½)	
960-1		375 (400-1)	
555 (600-1)		NA	
MIRL Rwy 18-36		REIL Rwy 18 and 36	