

WAAS CH <b>81940</b> <b>W01B</b>	APP CRS <b>012°</b>	Rwy Idg <b>4000</b> TDZE <b>124</b> Apt Elev <b>129</b>
----------------------------------------	------------------------	---------------------------------------------------------------

RNAV (GPS) RWY 1R  
BETHEL (BET)(PABE)

RNP APCH.

**T**  
**A** Circling NA west of Rwy 1L-19R. For uncompensated Baro-VNAV systems, LNAV/VNAV NA below -18°C or above 54°C.

**MISSED APPROACH:** Climb to 600 then climbing left turn to 2000 direct ROLLR and hold.

ATIS <b>119.8</b>	ANCHORAGE CENTER <b>125.2 372.0</b>	BETHEL TOWER ★ <b>118.7</b> (CTAF) <b>0</b>	GND CON <b>121.7</b>
----------------------	----------------------------------------	------------------------------------------------	-------------------------

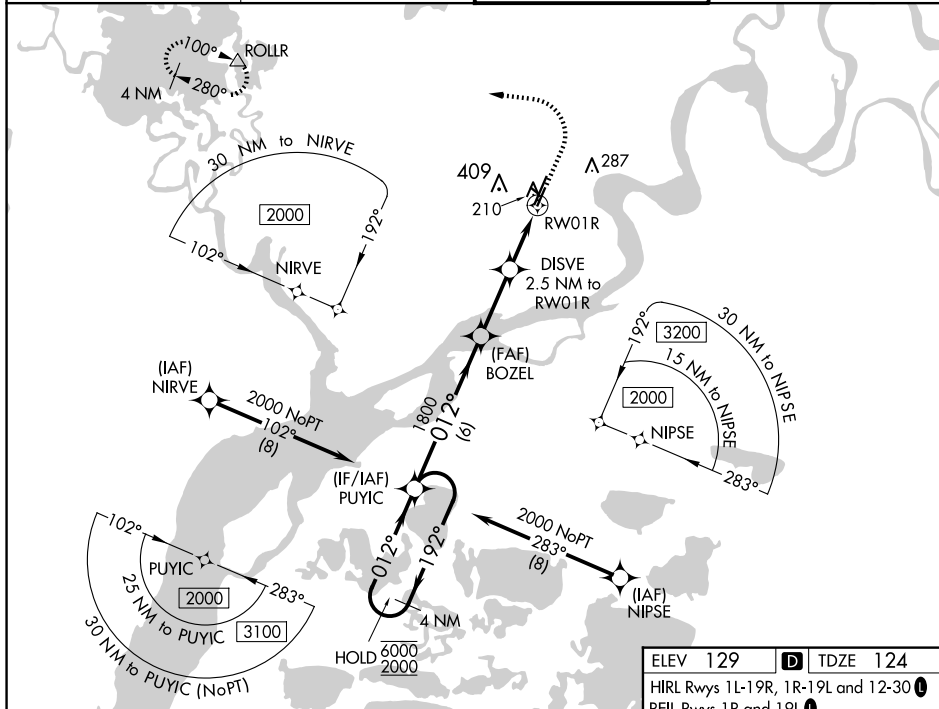
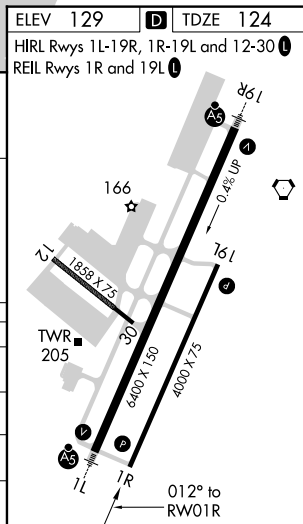


Diagram illustrating the RNAV glidepath not coincident (VGSI Angle 3.00/TCH 31).

The diagram shows a 4 NM Holding Pattern with a 192° inbound and 012° outbound. The glidepath is 012° with a 3.00° TCH. Key points and distances are marked:

- 6000 and 2000 feet altitudes.
- PUYIC (Point of Use of Initial Climb) at 1800 feet.
- BOZEL (Point of Zero Error) at 1800 feet.
- DISVE (Distance to Vertical Error) at 2.5 NM to RW01R.
- \*1 NM to RW01R.
- \*960 feet altitude.
- Distances: 6 NM, 2.6 NM, 1.5 NM, and 1 NM.
- Roller (△) and LNAV only indicator.

CATEGORY	A	B	C	D
LPV DA		374-3/4	250 (300-3/4)	
LNAV/ VNAV DA		374-3/4	250 (300-3/4)	
LNAV MDA		460-1	336 (400-1)	
<b>C</b> CIRCLING	500-1 371 (400-1)	600-1 471 (500-1)	600-1 1/2 471 (500-1 1/2)	680-2 551 (600-2)



AK, 12 JUN 2025 to 07 AUG 2025

AK. 12 JUN 2025 to 07 AUG 2025