

WAAS CH 42707 W01A	APP CRS 012°	Rwy Idg 6400 TDZE 127 Apt Elev 129
--	------------------------	---

RNAV (GPS) RWY 1L
BETHEL (BET)(PABE)

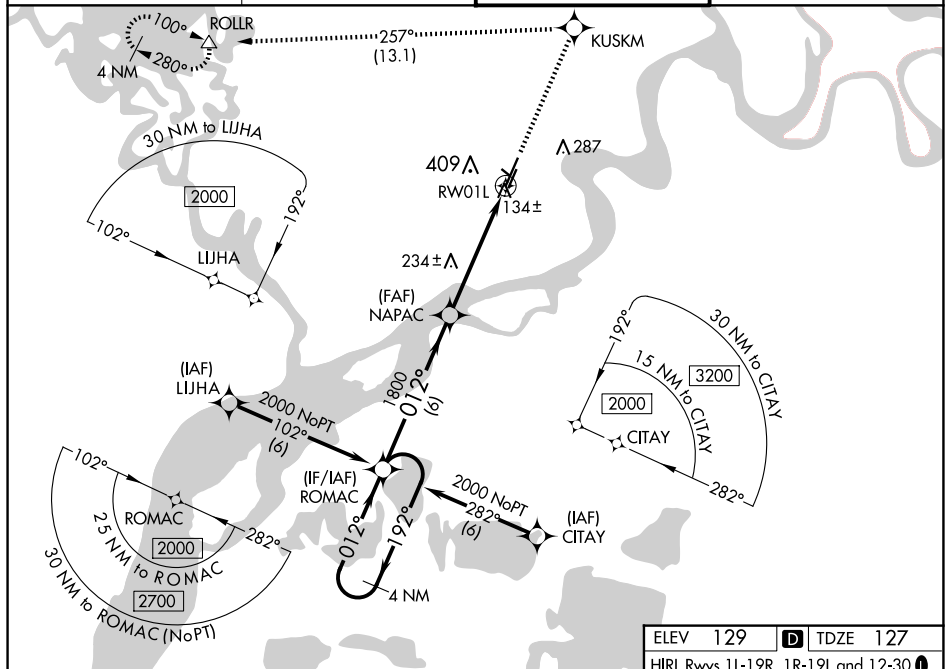
T For uncompensated Baro-VNAV systems, LNAV/VNAV NA below -25°C (-13°F) or above 54°C (130°F).
Circling NA west of Rwy 1L-19R. DME/DME RNP-0.3 NA.
For inop ALS, increase LNAV Cat C/D visibility to RVR 6000.

MALSR



MISSED APPROACH: Climb to 2000
direct KUSKM and left turn on track
257° to ROLLR and hold.

ATIS 119.8	ANCHORAGE CENTER 125.2 372.0	BETHEL TOWER ★ 118.7 (CTAF) 0	GND CON 121.7
----------------------	--	--	-------------------------



<p>VGSI and RNAV glidepath not coincident (VGSI Angle 3.00/TCH 39).</p> <p>4 NM Holding Pattern ROMAC</p> <p>2000 ← 192° 012° → 1800</p> <p>GP 3.00° TCH 47</p> <p>NAPAC 1800</p> <p>*1.1 NM to RW01L</p> <p>RW01L</p> <p>*LNAV only</p>		<p>2000 ↑</p>	<p>KUSKM</p>	<p>fr 257°</p>	<p>ROLLR △</p>
CATEGORY	A	B	C	D	
LPV DA		377/24	250 (300-½)		
LNAV/VNAV DA		555/50	428 (500-1)		
LNAV MDA		500/24	373 (400-½)	500/50	373 (400-1)
C CIRCLING	500-1 371 (400-1)	600-1 471 (500-1)	600-1½ 471 (500-1½)	680-2 551 (600-2)	

