

WAAS CH <b>70507</b> <b>W19A</b>	APP CRS <b>193°</b>	Rwy Idg <b>6400</b> TDZE <b>120</b> Apt Elev <b>129</b>
--	------------------------	---

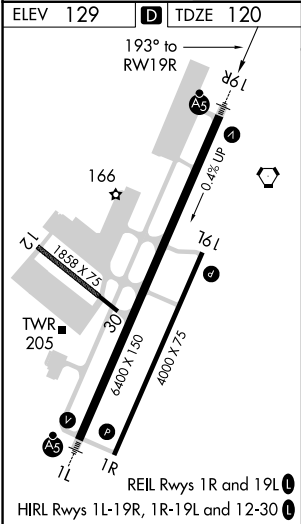
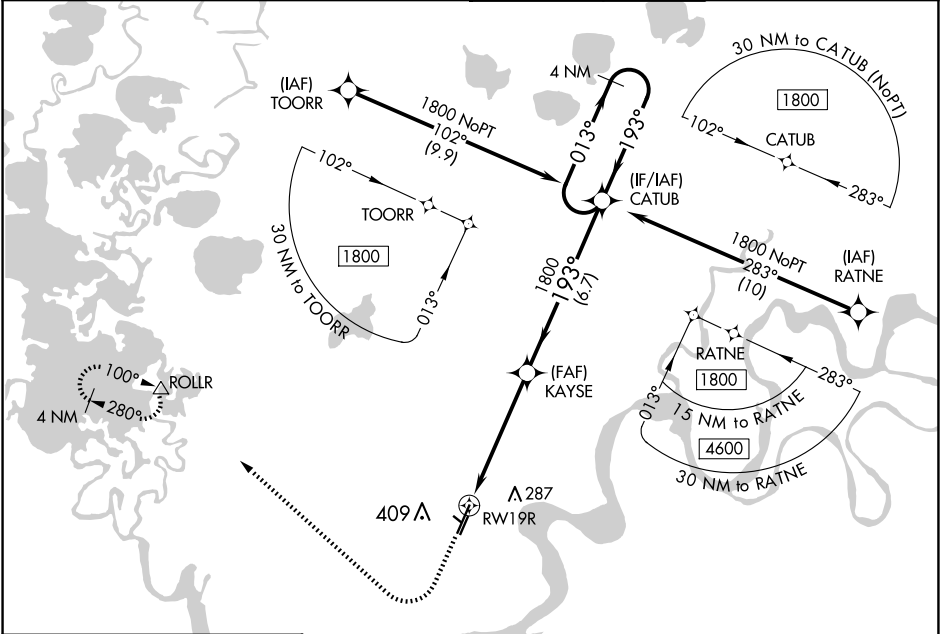
RNAV (GPS) RWY 19R  
BETHEL (BET)(PABE)

**▼** For uncompensated Baro-VNAV systems, LNAV/VNAV NA below -25°C (-13°F) or above 54°C (130°F). Circling NA west of Rwy 1L-19R. DME/DME RNP-0.3 NA.

MALSR

MISSED APPROACH: Climb to 1700 then climbing right turn to 2000 direct ROLLR and hold.

ATIS <b>119.8</b>	ANCHORAGE CENTER <b>125.2 372.0</b>	BETHEL TOWER ★ <b>118.7 (CTAF) 0</b>	GND CON <b>121.7</b>
----------------------	--	---	-------------------------



1700	2000	ROLLR
↑	↗	△
* LNAV only		
* 1.3 NM to RW19R		
GP 3.00° TCH 52		
1.3 NM		
3.9 NM		
6.7 NM		
KAYSE		
CATUB		
4 NM Holding Pattern		
1800		
1800		
193°		
013°		
193°		
1800		
1800		
193°		
013°		
193°		
1800		
1800		
193°		
013°		
193°		
1800		
1800		
193°		
013°		
193°		
1800		
1800		
193°		
013°		
193°		
1800		
1800		
193°		
013°		
193°		
1800		
1800		
193°		
013°		
193°		
1800		
1800		
193°		
013°		
193°		
1800		
1800		
193°		
013°		
193°		
1800		
1800		
193°		
013°		
193°		
1800		
1800		
193°		
013°		
193°		
1800		
1800		
193°		
013°		
193°		
1800		
1800		
193°		
013°		
193°		
1800		
1800		
193°		
013°		
193°		
1800		
1800		
193°		
013°		
193°		
1800		
1800		
193°		
013°		
193°		
1800		
1800		
193°		
013°		
193°		
1800		
1800		
193°		
013°		
193°		
1800		
1800		
193°		
013°		
193°		
1800		
1800		
193°		
013°		
193°		
1800		
1800		
193°		
013°		
193°		
1800		
1800		
193°		
013°		
193°		
1800		
1800		
193°		
013°		
193°		
1800		
1800		
193°		
013°		
193°		
1800		
1800		
193°		
013°		
193°		
1800		
1800		
193°		
013°		
193°		
1800		
1800		
193°		
013°		
193°		
1800		
1800		
193°		
013°		
193°		
1800		
1800		
193°		
013°		
193°		
1800		
1800		
193°		
013°		
193°		
1800		
1800		
193°		
013°		
193°		
1800		
1800		
193°		
013°		
193°		
1800		
1800		
193°		
013°		
193°		
1800		
1800		
193°		
013°		
193°		
1800		
1800		
193°		
013°		
193°		
1800		
1800		
193°		
013°		
193°		
1800		
1800		
193°		
013°		
193°		
1800		
1800		
193°		
013°		
193°		
1800		
1800		
193°		
013°		
193°		
1800		
1800		
193°		
013°		
193°		
1800		
1800		
193°		
013°		
193°		
1800		
1800		
193°		
013°		
193°		
1800		
1800		
193°		
013°		
193°		
1800		
1800		
193°		
013°		
193°		
1800		
1800		
193°		
013°		
193°		
1800		
1800		
193°		
013°		
193°		
1800		
1800		
193°		
013°		
193°		
1800		
1800		
193°		
013°		
193°		
1800		
1800		
193°		
013°		
193°		
1800		
1800		
193°		
013°		
193°		
1800		
1800		
193°		
013°		
193°		
1800		
1800		
193°		
013°		
193°		
1800		
1800		
193°		
013°		
193°		
1800		
1800		
193°		
013°		
193°		
1800		
1800		
193°		
013°		
193°		
1800		
1800		
193°		
013°		
193°		
1800		
1800		
193°		
013°		
193°		
1800		
1800		
193°		
013°		
193°		
1800		
1800		
193°		
013°		
193°		
1800		
1800		
193°		
013°		
193°		
1800		
1800		
193°		
013°		
193°		
1800		
1800		
193°		
013°		
193°		
1800		
1800		
193°		
013°		
193°		
1800		
1800		
193°		
013°		
193°		
1800		
1800		
193°		
013°		
193°		
1800		
1800		
193°		
013°		
193°		
1800		
1800		
193°		
013°		
193°		
1800		
1800		
193°		
013°		
193°		
1800		
1800		
193°		
013°		
193°		
1800		
1800		
193°		
013°		
193°		
1800		
1800		
193°		
013°		
193°		
1800		
1800		
193°		
013°		
193°		
1800		
1800		
193°		
013°		
193°		
1800		
1800		
193°		
013°		
193°		
1800		
1800		
193°		
013°		
193°		
1800		
1800		
193°		
013°		
193°		
1800		
1800		
193°		
013°		
193°		
1800		
1800		
193°		
013°		
193°		
1800		
1800		
193°		
013°		
193°		
1800		
1800		
193°		
013°		
193°		
1800		
1800		
193°		
013°		
193°		
180		

AK, 12 JUN 2025 to 07 AUG 2025

AK, 12 JUN 2025 to 07 AUG 2025