

BETHEL, ALASKA

AL-5001 (FAA)

22139

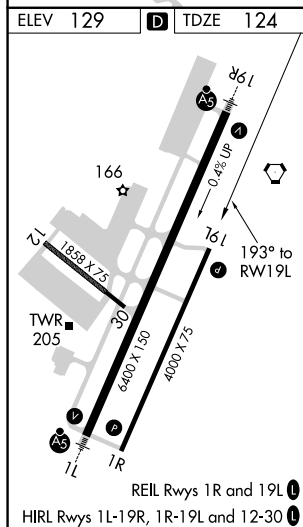
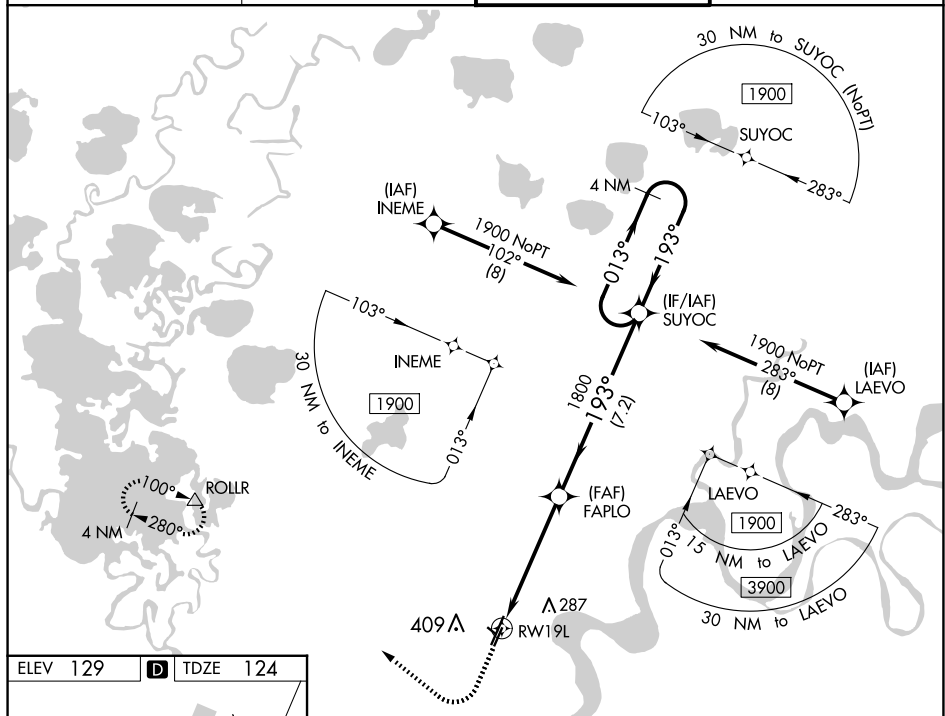
WAAS CH 99440 W19B	APP CRS 193°	Rwy Idg 4000 TDZE 124 Apt Elev 129
----------------------------------------	------------------------	---------------------------------------------------------------

RNAV (GPS) RWY 19L
BETHEL (BET) (PABE)

T For uncompensated Baro-VNAV systems, LNAV/VNAV NA below -19°C (-2°F) or above 54°C (130°F). Circling NA west of Rwy 1L-19R. DME/DME RNP-0.3 NA.

MISSED APPROACH: Climb to 600 then climbing right turn to 2000 direct ROLLR and hold.

ATIS 119.8	ANCHORAGE CENTER 125.2 372.0	BETHEL TOWER ★ 118.7 (CTAF) 0	GND CON 121.7
----------------------	----------------------------------------	-----------------------------------------	-------------------------



600 ↑	2000 ↗	ROLLR △	VGSI and RNAV glidepath not coincident (VGSI Angle 3.00/TCH 32).			
*LNAV only			FAPLO 1800	SUYOC	4 NM Holding Pattern	
*1.1 NM to RW19L RW19L			1800	193°	013° → ← 193°	1900
1.1 4 NM 7.2 NM			GP 3.00° TCH 50			
CATEGORY	A		B	C	D	
LPV DA	374-3/4		250 (300-3/4)			
LNAV/ VNAV	374-3/4		250 (300-3/4)			
LNAV MDA	500-1		376 (400-1)			
C CIRCLING	500-1 371 (400-1)	600-1 471 (500-1)	600-1½ 471 (500-1½)	680-2 551 (600-2)		

BETHEL, ALASKA

Amdt 1 22JUN17

BETHEL (BET)(PABE)

60°47'N-161°50'W

RNAV (GPS) RWY 19L

AK, 12 JUN 2025 to 07 AUG 2025

AK, 12 JUN 2025 to 07 AUG 2025