

RNAV (GPS) RWY 23

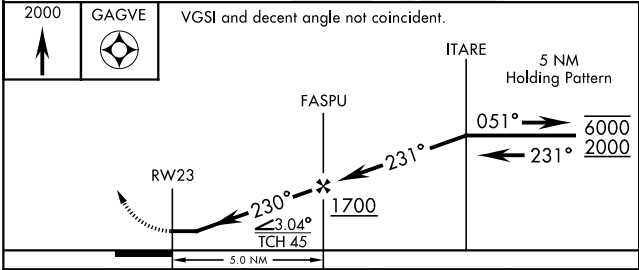
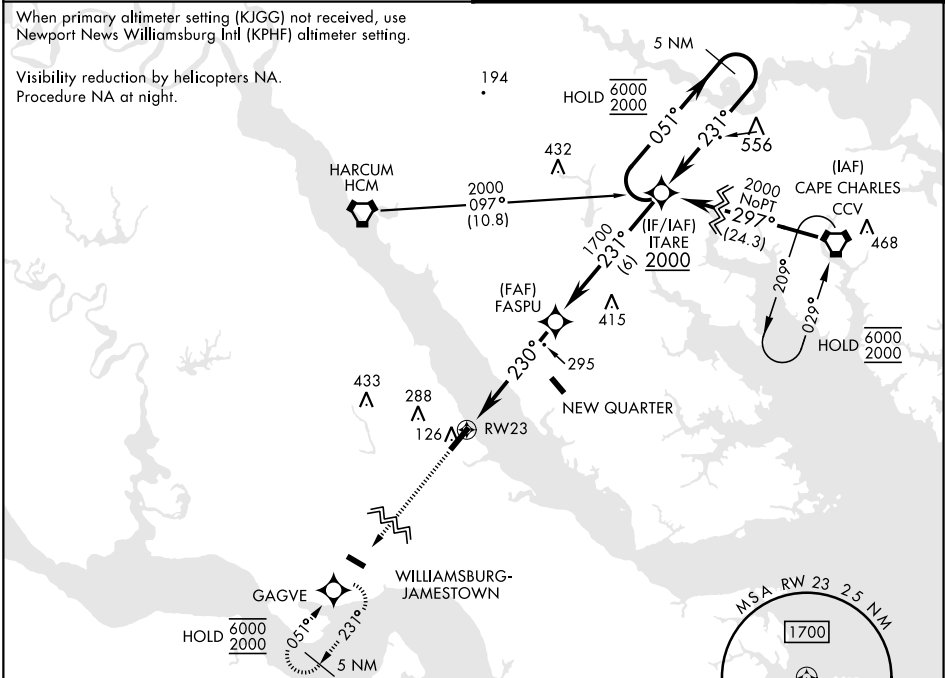
APCH CRS	Rwy Idg	5018
230°	TDZE	34
	Arpt Elev	41

[USA]

CAMP PEARY LNDG STRIP (KW94)

RNP APCH - GPS	Available Type Unknown	MISSED APPROACH: Climb to 2000 direct GAGVE and hold.
▼ Restricted airfield, PPR. Contact Camp Peary Ops prior to landing. Williamsburg Jamestown (KJGG) Primary altimeter setting.		

WILLIAMSBURG-JAMESTOWN AWOS-3 120.625	NORFOLK APP CON 125.7 335.625
--	----------------------------------



ELEV 41	TDZE 34
Rwy 05-23 Lead-In SFL.	

CATEGORY	A	B	C	D
LNAV MDA	560-1	526 (600-1)	560-1½	526 (600-1½)
CIRCLING	560-1 519 (600-1)	620-1 579 (600-1)	620-1½ 579 (600-1½)	760-2¼ 719 (800-2¼)
NEWPORT NEWS / WILLIAMSBURG INTL ALTIMETER SETTING MINIMUMS				
LNAV MDA	580-1	546 (600-1)	580-1½	546 (600-1½)
CIRCLING	580-1 539 (600-1)	620-1 579 (600-1)	620-1½ 579 (600-1½)	780-2¼ 739 (800-2¼)

RNAV (GPS) RWY 23