

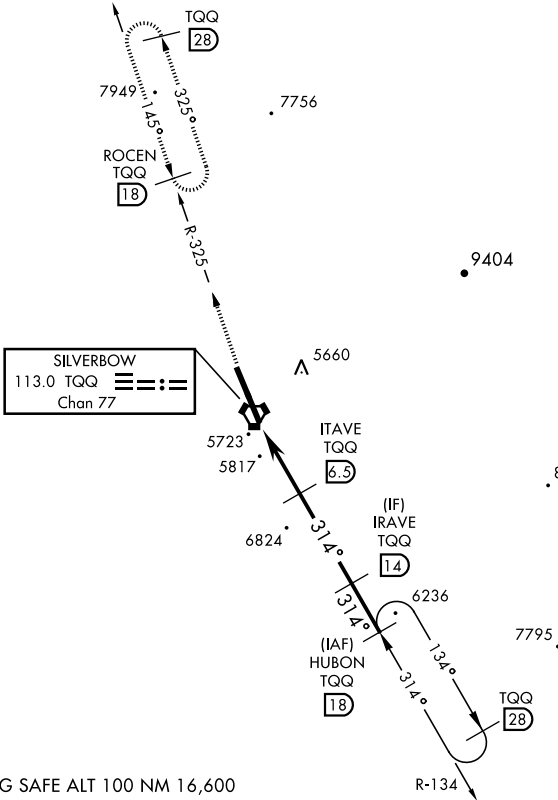


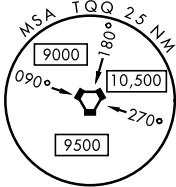
VOR/DME or TACAN RWY 32

VORTAC TQQ 113.0 Chan 77	APCH CRS 314°	Rwy Idg 12,001 THRE 5550 Arpt Elev 5550	AL-3188 [USAF]	TONOPAH TEST RANGE (KTNX)	
<div><div>T</div><div>* When ALS inop, increase CAT CDE vis to 1½ miles. ** Circling not authorized W of Rwy 14-32</div></div>			<div><div>ALSF-1</div><div></div></div>	<div>MISSED APPROACH: Climb to 11,000 via TQQ VORTAC R-325 to ROCEN and hold, continue climb in hold to 11,000.</div>	
<div><div>AWOS</div><div>113.0</div></div>		<div><div>NELLIS CONTROL</div><div>119.35 254.4</div></div>	<div><div>SILVERBOW TOWER★</div><div>124.75 257.95</div><div></div></div>		<div><div>GND CON</div><div>127.25 335.5</div></div>



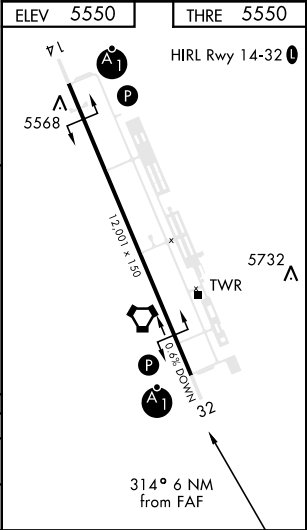
CAUTION: High terrain 3 NM W of Rwy. Unlit terrain 5561' MSL, 200' prior to threshold, 385' left of course.

When VGSi inop, procedure NA at night. USAF ONLY: When VGSi inop, straight-in Rwy 32 authorized at night with MAJCOM A3 approval.



EMERG SAFE ALT 100 NM 16,600

11,000	ROCEN TQQ 18	ITAVE 6.5	IRAVE 14	HUBON 18	10,400
TQQ R-325					
VORTAC	ITOGE 1				
		7400	8700		
					2.85° TCH 39
CATEGORY	A	B	C	D	E
S-32 *	6080-1		530	(600-1)	
CIRCLING**	6080-1	530 (600-1)	6080-1½ 530 (600-1½)	6100-2	550 (600-2)



VOR/DME or TACAN RWY 32

SW-4, 10 JUL 2025 to 07 AUG 2025

SW-4, 10 JUL 2025 to 07 AUG 2025