

VOR/DME or TACAN RWY 14

VORTAC TQQ 113.0 Chan 77	APCH CRS 145°	Rwy ldg 12,001 THRE 5473 Arpt Elev 5550
--------------------------------	------------------	---

AL-3188 [USAF]

TONOPAH TEST RANGE (KTNX)

⚠ * When ALS inop, increase CAT AB vis to 1 mile, CAT CDE vis to 1 3⁄8 miles.
** Circling not authorized W of Rwy 32.

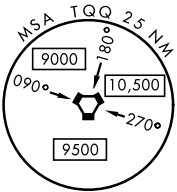
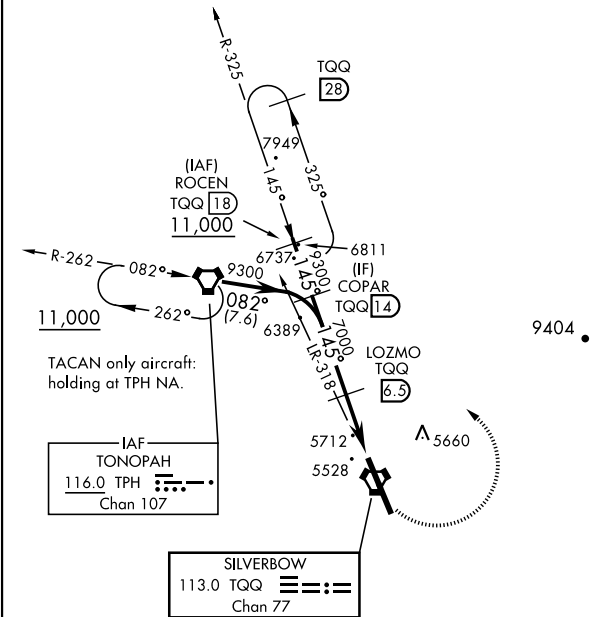


MISSED APPROACH: Turn left climbing to 11,000 via TQQ R-325 to ROCEN and hold, continue climb-in-hold to 11,000.

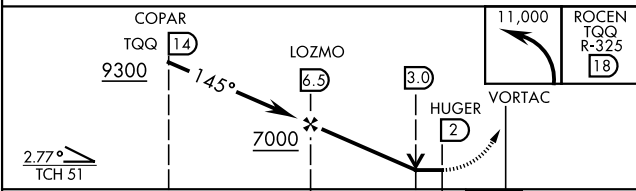
AWOS 113.0	NELLIS CONTROL 119.35 254.4	SILVERBOW TOWER★ 124.75 257.95 0	GND CON 127.25 335.5
---------------	--------------------------------	-------------------------------------	-------------------------

CAUTION: High terrain 3 NM W of Rwy. Unlit terrain 5558' MSL, 200' prior to Rwy 32 threshold, 200' left of centerline.

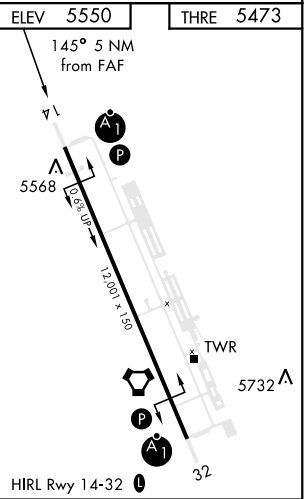
When VGSI inop, procedure NA at night.
USAF ONLY: When Rwy 14 VGSI inop, straight-in Rwy 14 authorized at night with MAJCOM A3 approval.
CAUTION: When Rwy 32 VGSI inop, circling to Rwy 32 NA at night.



EMERG SAFE ALT 100 NM 16,600



CATEGORY	A	B	C	D	E
S-14 *	5980-1/2 507 (500-1/2)		5980-1	507 (500-1)	
CIRCLING**	6040-1 490 (500-1)		6040-1 1/2 490 (500-1 1/2)	6100-2 550 (600-2)	



VOR/DME or TACAN RWY 14

SW-4, 10 JUL 2025 to 07 AUG 2025

SW-4, 10 JUL 2025 to 07 AUG 2025