

RNAV (GPS) RWY 32

APCH CRS	Rwy ldg
321°	12,001
	TDZE
	5550
	Arpt Elev
	5550

AL-3188 [USAF]

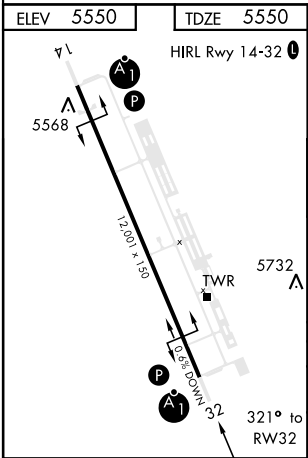
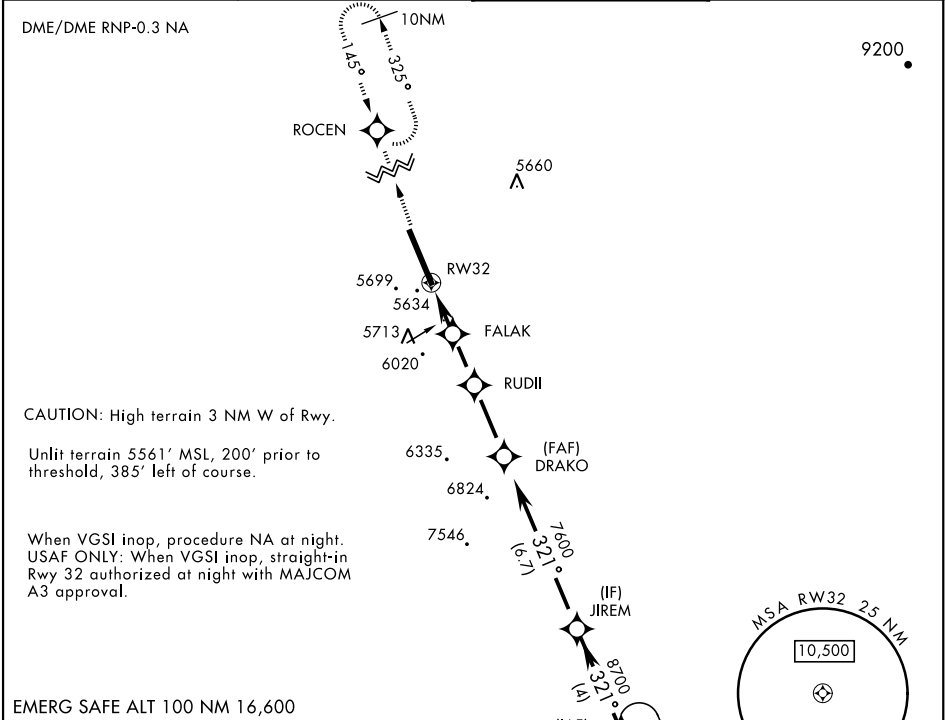
TONOPAH TEST RANGE (KTNX)



**⚠** \* When ALS inop, increase CAT CD vis to 1¼ miles.  
\*\* Circling not authorized W of Rwy 14-32.

ALS F-1

MISSED APPROACH: Climb to 11,000 direct ROCEN and hold, continue climb-in-hold to 11,000.

AWOS	NELLIS CONTROL	SILVERBOW TOWER ★	GND CON
113.0	119.35 254.4	124.75 257.95 0	127.25 335.5



11,000		ROCEN		JIREM	
					
RW32		FALAK		DRAKO	
1.3 NM to RW32		6160		7600	
1.9 NM		2.1 NM		2.8 NM	
6700		6700		8700	
321°		321°		321°	
2.83° TCH 39 (from FALAK)					
CATEGORY		A		B	
LNAV MDA *		5980/24 430 (500-½)		5980/40 430 (500-¾)	
CIRCLING **		6040-1 490 (500-1)		6040-1½ 490 (500-½)	
				6100-2 550 (600-2)	

RNAV (GPS) RWY 32

SW-4, 10 JUL 2025 to 07 AUG 2025

SW-4, 10 JUL 2025 to 07 AUG 2025