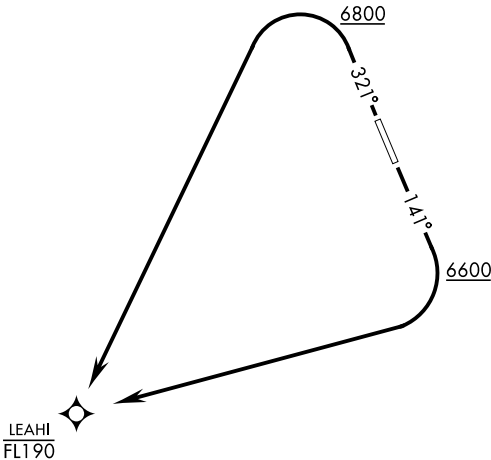


AWOS 113.0 GND CON 127.25 335.5 SILVERBOW TOWER ★ 124.75 257.95 NELLIS CONTROL 119.35 254.4	[USAF] AL-3188	Rwy	Knots	60	120	180	240	300	360
		14 (a)	V/V(fpm)	387	774	1161	1548	1935	2322
		32 (b)	V/V(fpm)	336	672	1008	1344	1680	2016
		Minimum Climb Rate							
		(a) to 8200							
		(b) to 8300							



RNAV1
GPS REQUIRED

▼

DEPARTURE ROUTE DESCRIPTION

TAKEOFF RWY 14: Climb on heading 141° to 6600, then right turn direct to cross LEAHI at or below FL190 or as assigned by ATC.

TAKEOFF RWY 32: Climb on heading 321° to 6800, then left turn direct to cross LEAHI at or below FL190 or as assigned by ATC.

SW-4, 10 JUL 2025 to 07 AUG 2025

SW-4, 10 JUL 2025 to 07 AUG 2025