

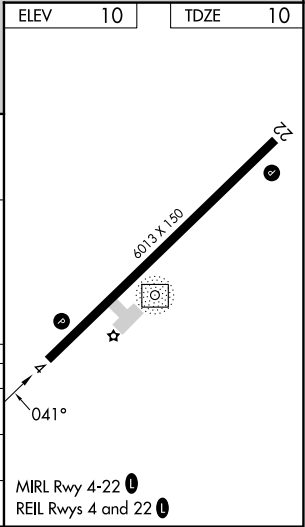
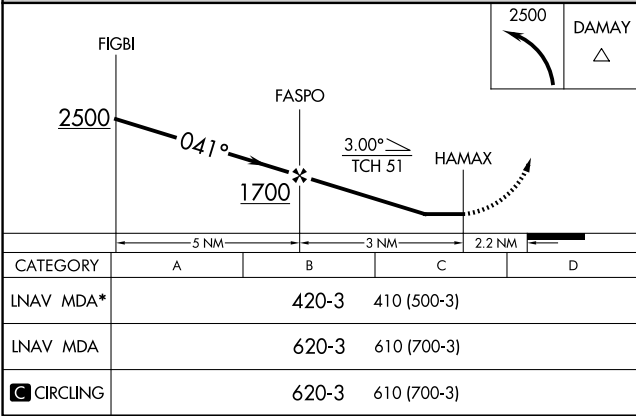
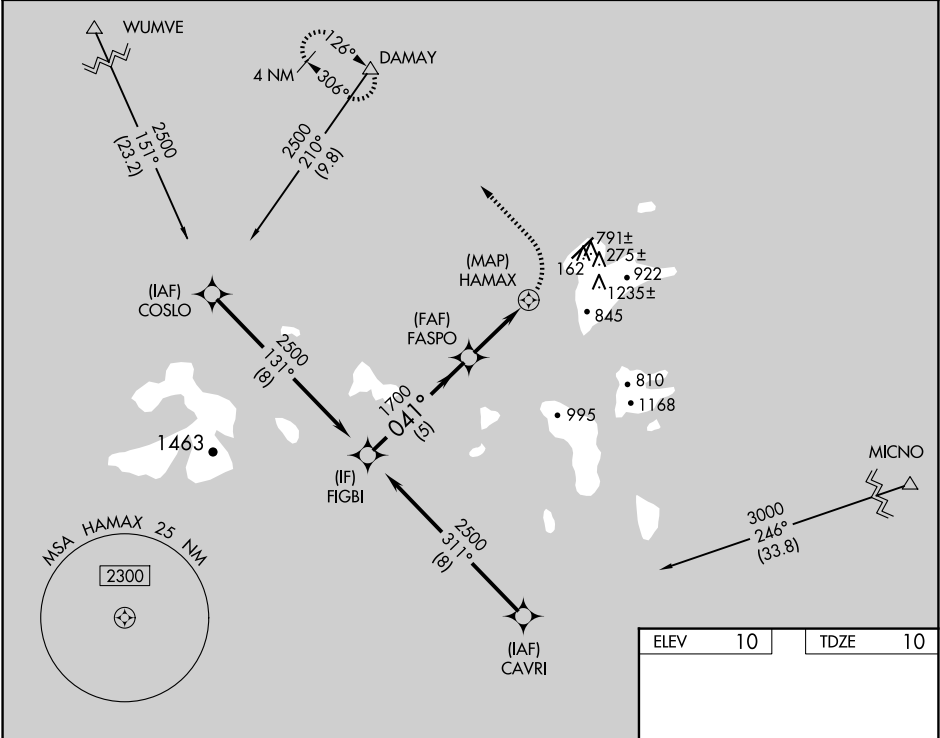
APP CRS	Rwy ldg	6013
041°	TDZE	10
	Apt Elev	10

RNAV (GPS) RWY 4

CHUUK INTL (TKK) (PTKK)

RNP APCH.	MISSED APPROACH: Climbing left turn to 2500 direct DAMAY and hold. * Missed approach requires minimum climb of 375 feet per NM to 960.
Obtain local altimeter setting on CTAF; when not received, procedure NA. Circling NA southeast of Rwy 4-22. No controlled airspace below 5500.	

TRUK RADIO
123.6 (CTAF)



PAC, 12 JUN 2025 to 07 AUG 2025

PAC, 12 JUN 2025 to 07 AUG 2025