

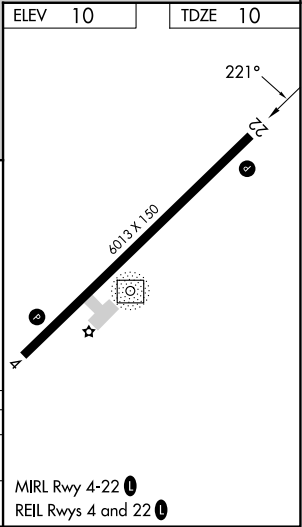
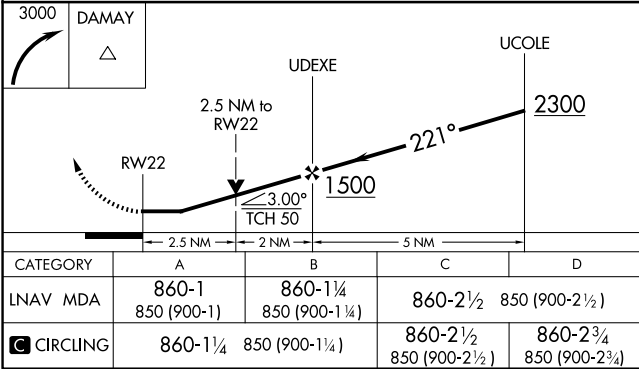
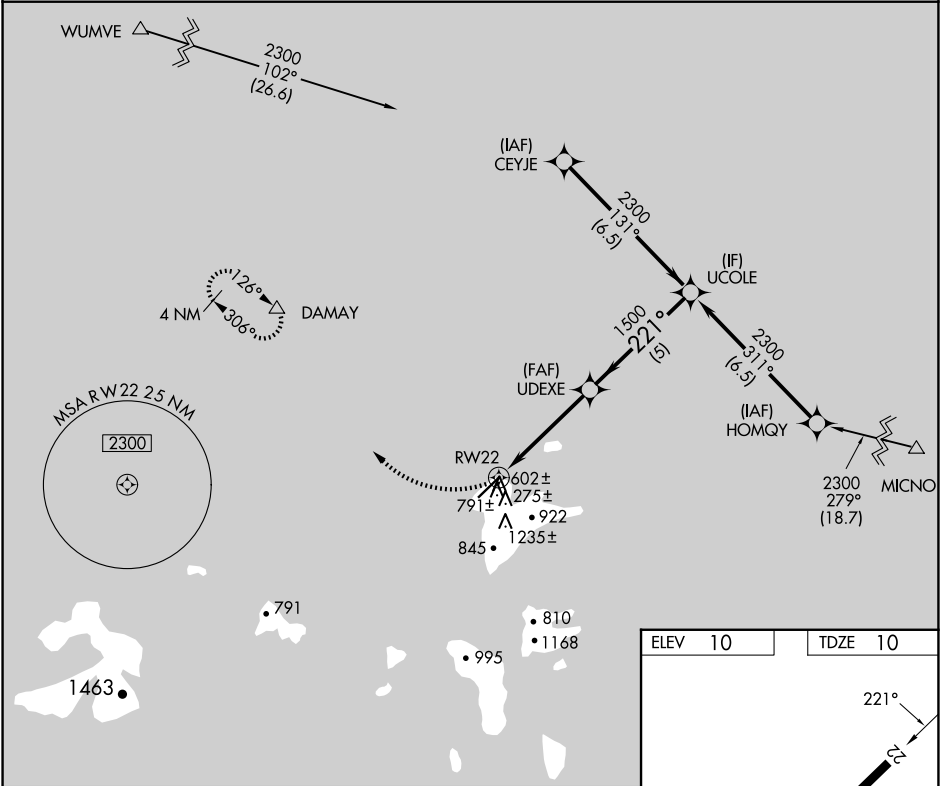
APP CRS	Rwy Idg	6013
221°	TDZE	10
	Apt Elev	10

RNAV (GPS) RWY 22

CHUUK INTL (TKK) (PTKK)

RNP APCH.	MISSED APPROACH: Climbing right turn to 3000 direct DAMAY and hold.
Circling NA southeast of Rwy 4-22. Obtain local altimeter setting on CTAF; when not received, procedure NA. No controlled airspace below 5500.	

TRUK RADIO
123.6 (CTAF)



PAC, 12 JUN 2025 to 07 AUG 2025

PAC, 12 JUN 2025 to 07 AUG 2025