

COPTER RNAV (GPS) RWY 35

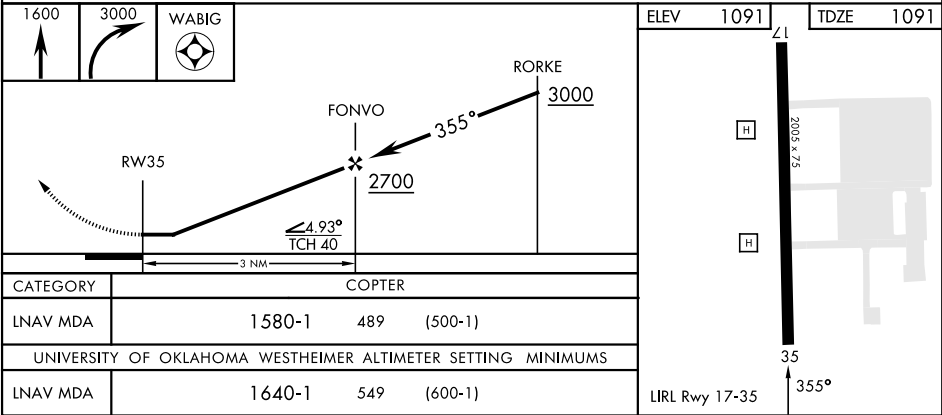
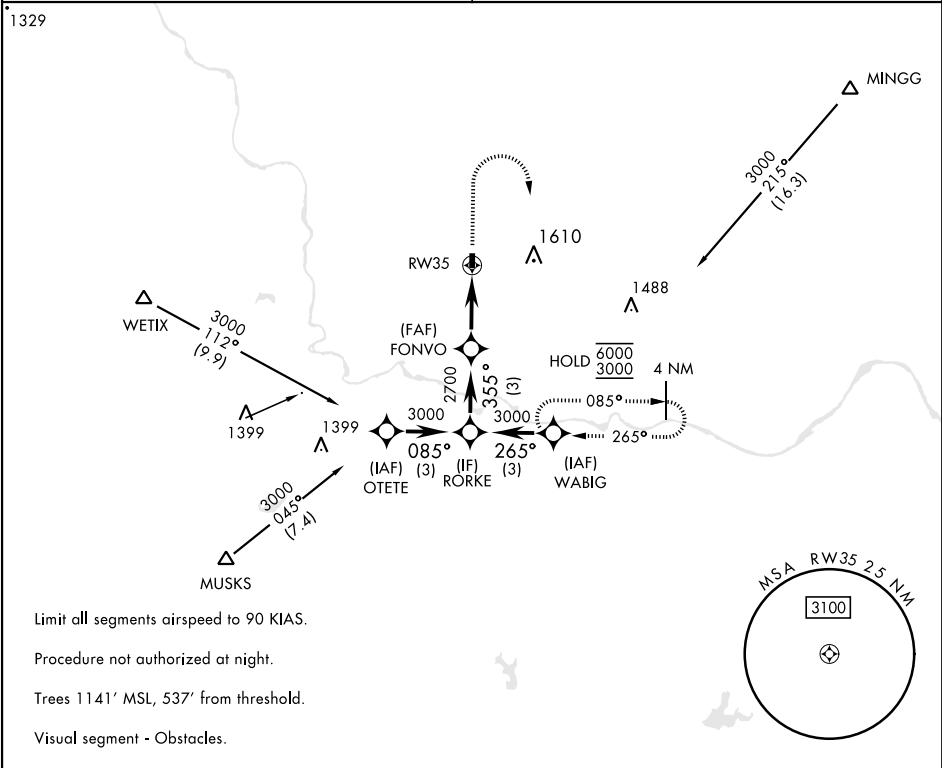
APCH CRS	Rwy Idg	2005
355°	TDZE	1091
	Arpt Elev	1091

[USA]

MULDROW AHP (KHMY)

RNP APCH - GPS	MISSED APPROACH: Climb to 1600, then climbing right turn to 3000 direct WABIG and hold.
Obtain local altimeter setting on CTAF; when not received, use University of Oklahoma Westheimer altimeter setting minimums.	

OKE CITY APP CON 124.2 336.4	MULDROW OPS (Advisory service only) 46.9 139.425 227.2 (CTAF)
---------------------------------	--



COPTER RNAV (GPS) RWY 35

SC-1, 10 JUL 2025 to 07 AUG 2025

SC-1, 10 JUL 2025 to 07 AUG 2025