

COPTER RNAV (GPS) RWY 17

APCH CRS	Rwy Idg	2005
175°	TDZE	1091
	Arpt Elev	1091

[USA]

MULDROW AHP (KHMY)

RNP APCH - GPS



Obtain local altimeter setting on CTAF; when not received, use University of Oklahoma Westheimer altimeter setting minimums.

MISSED APPROACH: Climbing left turn to 3000 direct IMME and hold.

124.2 336.4

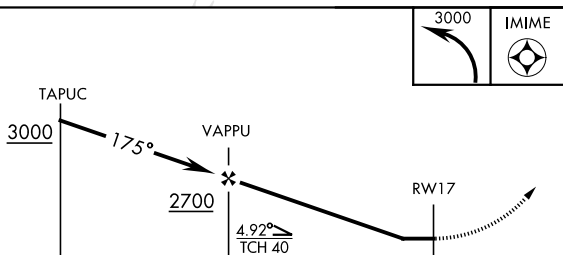
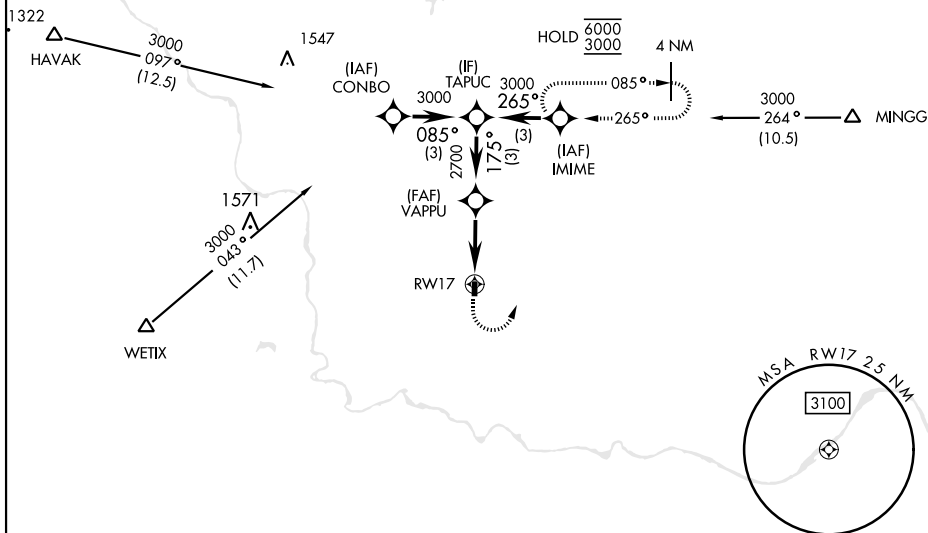
MULDROW OPS (Advisory service only)
46.9 139.425 227.2 (CTAF)

Limit all segments airspeed to 90 KIAS.

Procedure not authorized at night.

Trees 1134' MSL, 364' from threshold.

Visual segment - Obstacles.



ELEV	1091			TDZE	1091
------	------	--	--	------	------

↓

TDZE	1091
------	------

↓

H

2005 x 75

H

3.5

CATEGORY	COPTER		
LNAV MDA	1660-1	569	(600-1)
UNIVERSITY OF OKLAHOMA WESTHEIMER ALTIMETER SETTING MINIMUMS			
LNAV MDA	1720-1	629	(700-1)

LIRL Rwy 17-35

LEXINGTON, OKLAHOMA

35°02'N-97°14'W

MULDROW AHP (KHYM)

Amdt 1 05SEP24

COPTER RNAV (GPS) RWY 17

SC-1, 10 JUL 2025 to 07 AUG 2025

SC-1, 10 JUL 2025 to 07 AUG 2025