

RNAV (GPS) RWY 17

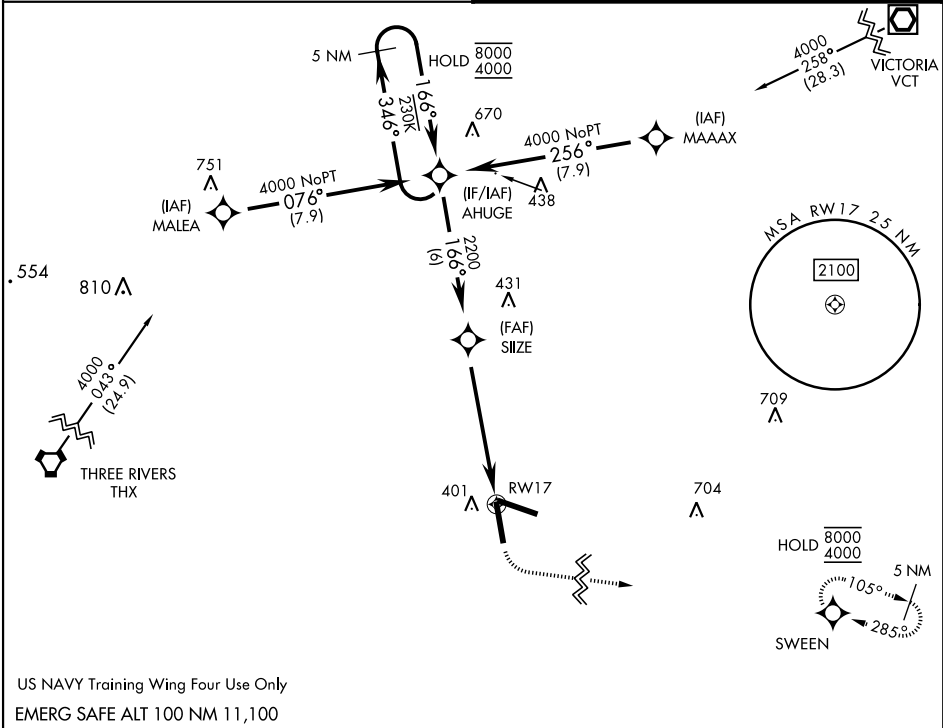
APCH CRS	Rwy Idg	8001
166°	TDZE	322
	Arpt Elev	322

[USN]

GOLIAD NOLF (KNGT)

RNP APCH	MISSED APPROACH: Climb to 900 then climbing left turn to 4000 direct SWEEN and hold, continue climb-in-hold to 4000.
When local altimeter setting not received, use Beeville Muni altimeter setting.	

ASOS 353.675	CTAF 132.875 307.075
-----------------	-------------------------



5 NM Holding Pattern	AHUGE	VDP NA with Beeville Muni altimeter setting.	900	4000	SWEEN	ELEV 322	TDZE 322
8000	4000	346°	166°	166°	166°	328	35
2200	3000	3.00°	TCH 54	5.7 NM	0.8 NM to RW17	0.35 NM	0.7% UP
CATEGORY	A	B	C	D			
LNAV MDA	640-1	318	(400-1)				
CIRCLING	760-1	780-1	780-1½	880-2			
	438 (500-1)	458 (500-1)	458 (500-1½)	558 (600-2)			
BEEVILLE MUNI ALTIMETER SETTING MINIMA							
LNAV MDA	680-1	358	(400-1)				
CIRCLING	800-1	820-1	820-1½	880-2			
	478 (500-1)	498 (500-1)	498 (500-1½)	558 (600-2)			

RNAV (GPS) RWY 17

SC-3, 10 JUL 2025 to 07 AUG 2025

SC-3, 10 JUL 2025 to 07 AUG 2025