

RNAV (GPS) RWY 11

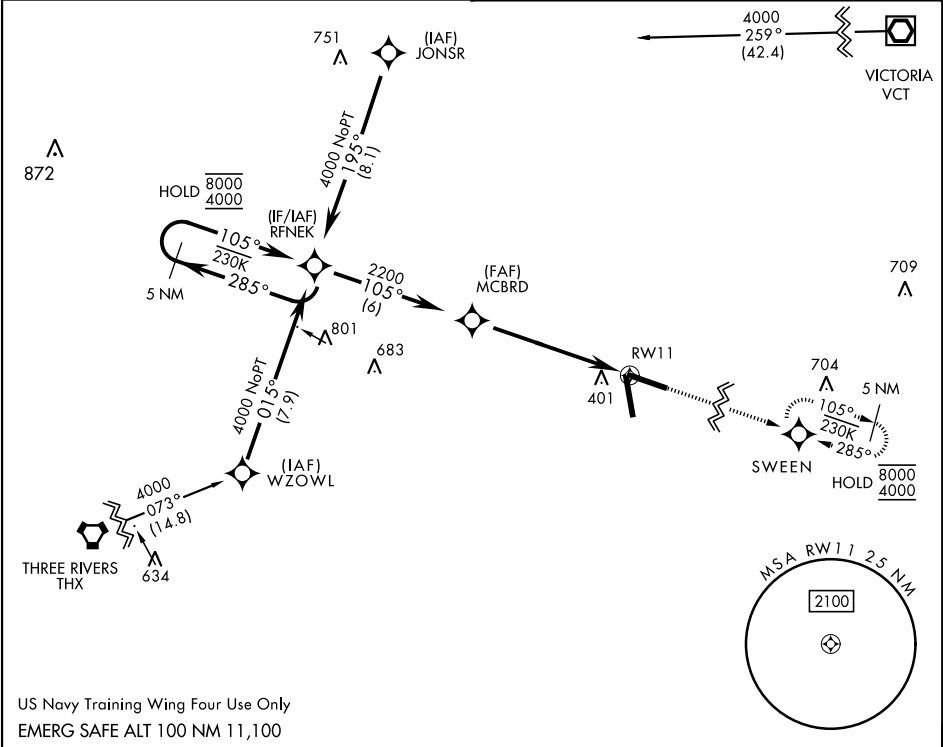
APCH CRS	Rwy Idg
105°	8000
	TDZE
	318
	Arpt Elev
	322

[USN]

GOLIAD NOLF (KNGT)

RNP APCH	MISSED APPROACH: Climb to 4000 direct SWEEN and hold, continue climb-in-hold to 4000.
----------	---

ASOS 353.675	CTAF 132.875 307.075
-----------------	-------------------------



US Navy Training Wing Four Use Only
EMERG SAFE ALT 100 NM 11,100

5 NM Holding Pattern	RFNEK	VDP NA with Beeville Muni altimeter setting.	4000	SWEEN	ELEV 322	TDZE 318
CATEGORY	A	B	C	D		
RNAV MDA	720-1 402 (400-1)	720-1 402 (400-1)	720-1 402 (400-1)	720-1 402 (400-1)		
CIRCLING	800-1 478 (500-1)	820-1 498 (500-1)	820-1 498 (500-1)	880-2 558 (600-2)		
BEEVILLE MUNI ALTIMETER SETTING MINIMA						
RNAV MDA	760-1 442 (500-1)	760-1 442 (500-1)	760-1 442 (500-1)	760-1 442 (500-1)		
CIRCLING	800-1 478 (500-1)	820-1 498 (500-1)	820-1 498 (500-1)	880-2 558 (600-2)		
					HIRL Rwy 11-29, 17-35 TDZL Rwy 11-29, 17-35	

RNAV (GPS) RWY 11

SC-3, 10 JUL 2025 to 07 AUG 2025

SC-3, 10 JUL 2025 to 07 AUG 2025