

RNAV (GPS) RWY 25

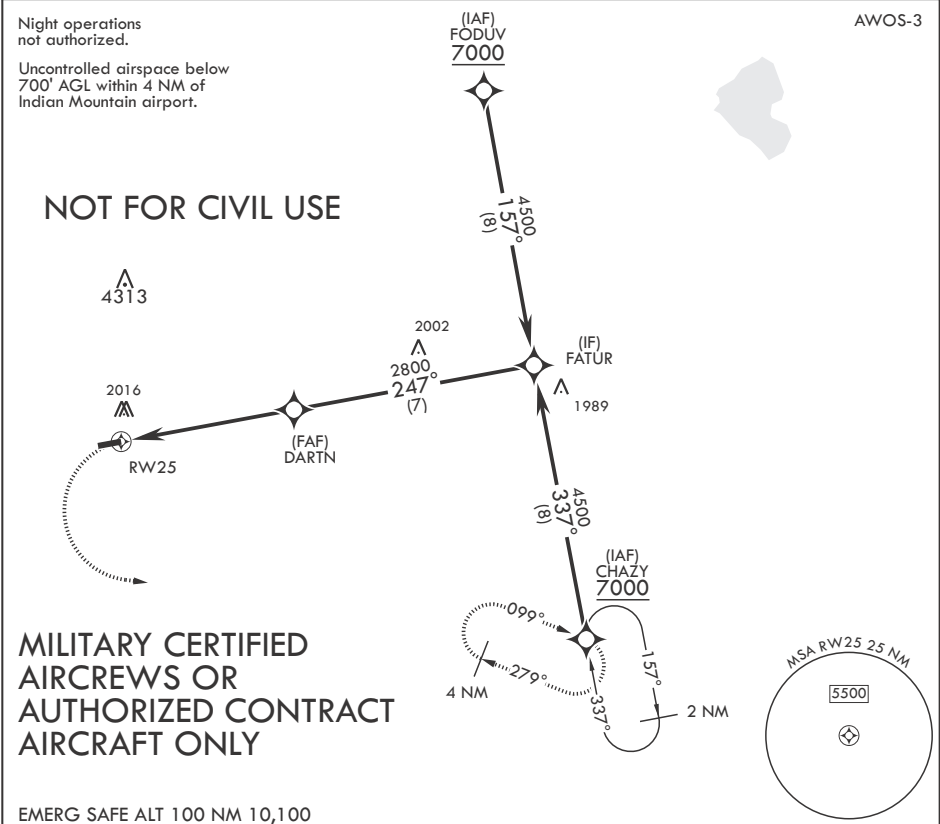
APCH CRS	Rwy Idg	4100
247°	TDZE	1161
	Arpt Elev	1261

- (USAF)

INDIAN MOUNTAIN LRRS (PAIM)

RNP APCH-GPS	MISSED APPROACH: Climbing left turn to 7000 direct CHAZY and hold. Continue climb in hold to 7000.
--------------	--

ANCHORAGE CENTER 124.6 352.0	CTAF 126.2	FAIRBANKS RADIO 122.6
---------------------------------	---------------	--------------------------



7000 CHAZY	VGSI and descent angles not coincident (VGSI angle 4.00/TCH 40).	PAPI beyond 8° right of RCL unusable.	FATUR	ELEV 1261	TDZE 1161
			Takeoff Rwy 7 Land Rwy 25		
RW25					
3.2 NM to RW25					
≤ 3.36° TCH 40					
5 NM					
CATEGORY	A	B	C	D	
LNAV MDA	2360-1¼ 1199 (1100-1¼)	2360-1½ 1199 (1100-1½)	NA		
CIRCLING	NOT AUTHORIZED				REIL Rwy 25

RNAV (GPS) RWY 25

AK, 12 JUN 2025 to 07 AUG 2025

AK, 12 JUN 2025 to 07 AUG 2025