

RNAV (GPS) RWY 35

APCH CRS	Rwy Idg
349°	4702
TDZE	273
Arpt Elev	273

[USAF]

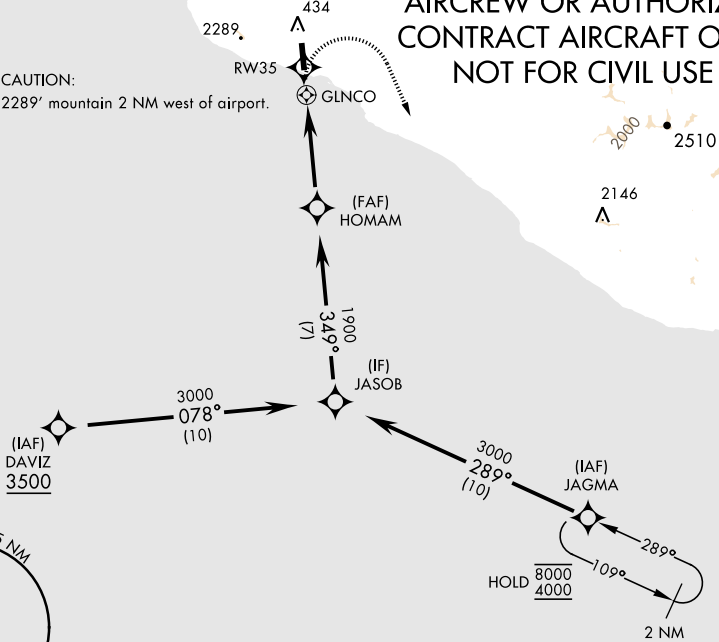
TIN CITY LRSS (PATC)

RNP APCH-GPS	MISSED APPROACH: Climb to 1500 then climbing right turn to 4000 direct JAGMA and hold.
Night operations not authorized. *Circling not authorized W of Rwy 17-35.	

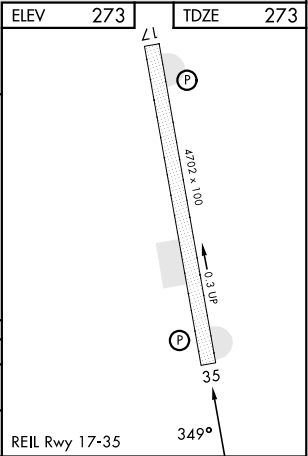
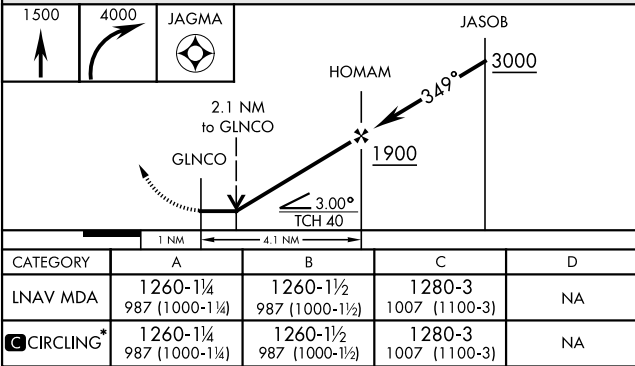
ANCHORAGE CENTER 133.3 290.4	TIN CITY RCO (NOME RADIO) 122.6	UNICOM 126.2 (CTAF)
---------------------------------	------------------------------------	------------------------

Uncontrolled airspace below 700' AGL within 7 NM of Tin City airport.

MILITARY CERTIFIED
AIRCREW OR AUTHORIZED
CONTRACT AIRCRAFT ONLY
NOT FOR CIVIL USE



EMERG SAFE ALT 100 NM 7000



RNAV (GPS) RWY 35

AK, 12 JUN 2025 to 07 AUG 2025

AK, 12 JUN 2025 to 07 AUG 2025