

NDB/DME TNC <b>347</b> Chan <b>119 (Y)</b>	APCH CRS <b>343°</b>	Rwy Idg TDZE Arpt Elev <b>4702</b> <b>273</b> <b>273</b>
--	-------------------------	---

[USAF]

TIN CITY LRRS (PATC)

▼ \* Circling not authorized W of Rwy 17-35.  
Night operations not authorized.

MISSED APPROACH: Climbing right turn to 3600 intercept TNC 163° bearing to WNGCO and hold.  
Continue climb-in-hold to 3600.

ANCHORAGE CENTER  
**133.3 290.4**

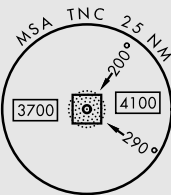
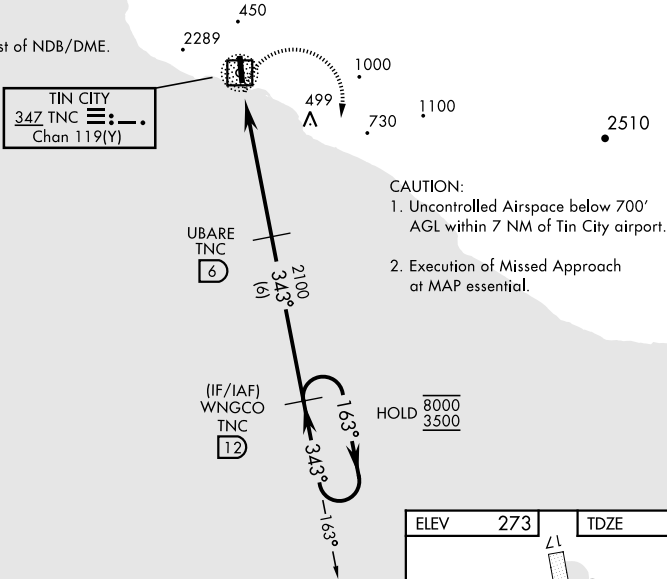
TIN CITY RCO (NOME RADIO)  
**122.6**

UNICOM  
**126.2 (CTAF)**

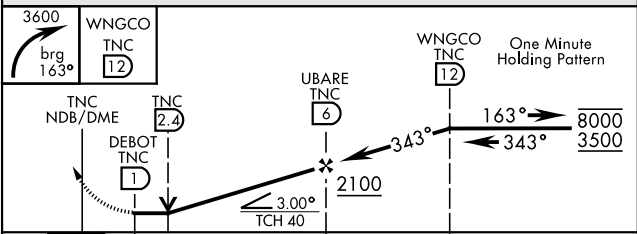
MILITARY CERTIFIED  
AIRCREWS OR AUTHORIZED  
CONTRACT AIRCRAFT ONLY

NOT FOR CIVIL USE

CAUTION:  
2289' mountain 2 NM West of NDB/DME.



EMERG SAFE ALT 100 NM 7000



CATEGORY	A	B	C	D
S-35	980-1 707 (800-1)		980-2 707 (800-2)	NOT AUTHORIZED
CIRCLING*	980-1 707 (800-1)		980-2 707 (800-2)	NOT AUTHORIZED

