

RNAV (GPS) RWY 35

APCH CRS	Rwy Idg	4200
348°	TDZE	1476
	Arpt Elev	1565

[USAF]

SPARREVOHN LRRS (PASV)

RNP APCH - GPS		MISSED APPROACH: Climbing right turn to 5500 direct LIVME and hold.	
Night operations not authorized. Circling not authorized.			
ANCHORAGE CENTER	KENAI RCO	UNICOM	AWOS-3
134.3 351.8	122.5	126.2 (CTAF)	

Visibility reduction by helicopters not authorized.

Uncontrolled airspace below 700 AGL within 3 NM of Sparrevohn Airport.

Procedure NA when MOA 1782 (NAKNEK 2 MOA) is active unless coordination with Anchorage Center is completed.

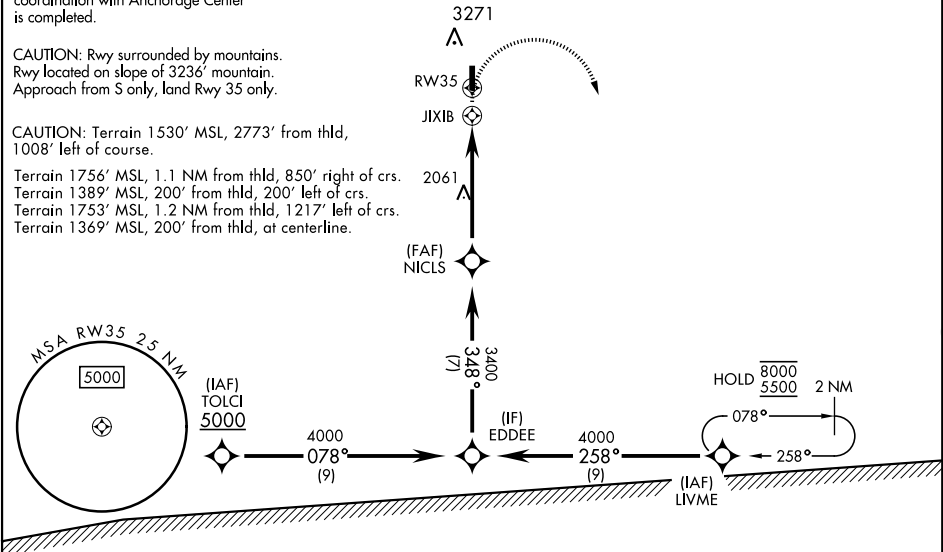
CAUTION: Rwy surrounded by mountains. Rwy located on slope of 3236' mountain. Approach from S only, land Rwy 35 only.

CAUTION: Terrain 1530' MSL, 2773' from thld, 1008' left of course.

Terrain 1756' MSL, 1.1 NM from thld, 850' right of crs.
Terrain 1389' MSL, 200' from thld, 200' left of crs.
Terrain 1753' MSL, 1.2 NM from thld, 1217' left of crs.
Terrain 1369' MSL, 200' from thld, at centerline.

MILITARY CERTIFIED AIRCEW OR
AUTHORIZED CONTRACT AIRCRAFT ONLY
NOT FOR CIVIL USE

3783



MOA 1782 (NAKNEK 2 MOA)

EMERG SAFE ALT 100 NM 13,700

5500	LIVME	VGSI and descent angle not coincident (VGSI Angle 4.00/TCH 52)
------	-------	--

EDDEE 4000

NICLS 3400

JIXIB

3.00° TCH 52

1 NM 5.2 NM

CATEGORY	A	B	C	D
LNAV MDA	3220-1¼ 1744 (1700-1¼)	3380-1½ 1904 (1900-1½)	3460-3 1984 (1900-3)	NOT AUTHORIZED
CIRCLING	NOT AUTHORIZED			

ELEV	1565	TDZE	1476
------	------	------	------

Land Rwy 35
Takeoff Rwy 17

4.8% UP
4200 x 150

35

348°

REIL Rwy 35

RNAV (GPS) RWY 35

AK, 12 JUN 2025 to 07 AUG 2025

AK, 12 JUN 2025 to 07 AUG 2025