

SPARREVOHN LRRS (PASV)

**MISSED APPROACH:** Climb to 4200, then climbing right turn to 5600 direct CRN and hold. Continue climb in hold to 5600.

ANCHORAGE CENTER <b>134.3 351.8</b>	KENAI RCO <b>122.5</b>	SPARREVOHN RADIO <b>126.2</b> (CTAF)	AWOS-3
--	---------------------------	---	--------

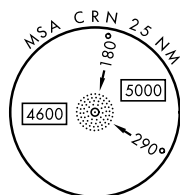
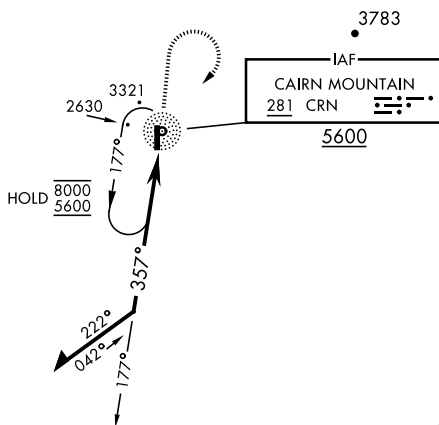
MILITARY CERTIFIED  
AIRCREWS OR AUTHORIZED  
CONTRACT AIRCRAFT ONLY

CAUTION: Terrain 1530' MSL, 2773' from thld,  
1008' left of course.

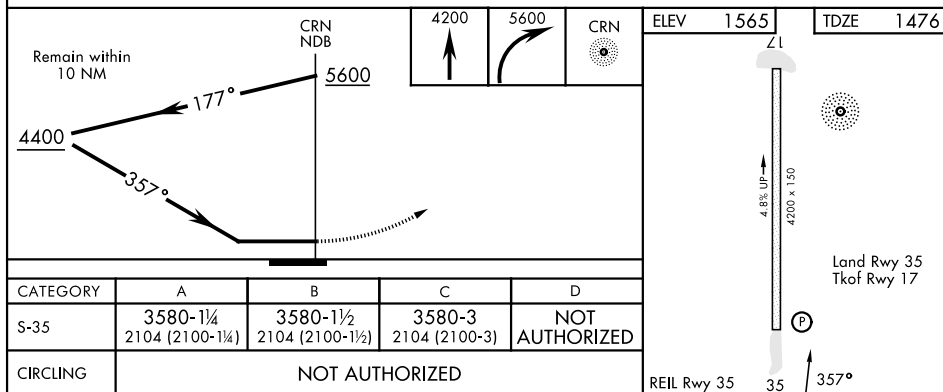
Successful go-around improbable if initiated past the MAP.

Uncontrolled Airspace  
below 700' AGL within  
3 NM of Sparrevohn  
airport.

NOT FOR CIVIL USE



EMERG SAFE ALT 100 NM 13,700



SPARREVOHN LRRS (PASV)

Orig 31OCT24

NDB RWY 35

AK, 12 JUN 2025 to 07 AUG 2025