

RNAV (GPS) RWY 27

| | | |
|----------|-----------|------|
| APCH CRS | Rwy ldg | 4800 |
| 258° | THRE | 14 |
| | Arpt Elev | 14 |

[USAF]

CAPE LISBURNE LRRS (PALU)

| | | |
|-----------------------------------|--|--|
| RNP APCH - GPS | | MISSED APPROACH: (Do not exceed 220 KIAS until turn completion). Climbing right turn to 3200 direct TAKME and hold. |
| <div>▼</div> | * Circling not authorized S of runway 9-27 Night operations not authorized. | |
| ANCHORAGE CENTER 119.65 363.25 | KOTZEBUE RADIO ★ 122.3 | CTAF 126.2 |

MILITARY CERTIFIED
AIRCRAFTS OR AUTHORIZED
CONTRACT AIRCRAFT
ONLY

NOT FOR CIVIL USE

Helo vis reduction below 1 mile not authorized.
Uncontrolled Airspace below 700' AGL
within 7 NM of Cape Lisburne airport.

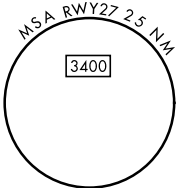
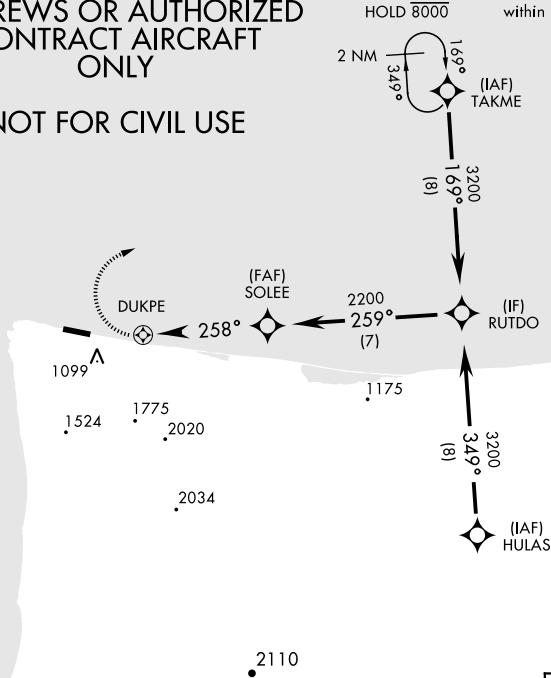
Unlit weather equipment,
168' MSL, 278' from thld,
19' right of course.

Terrain 630' MSL,
1.88 NM from thld,
1159' left of course.

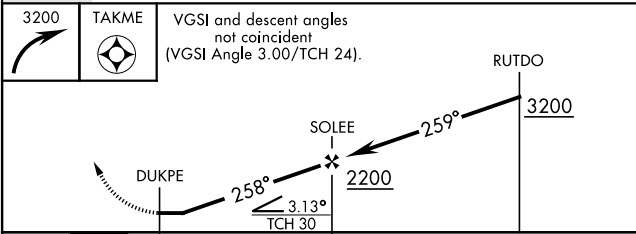
Terrain 31' MSL,
200' from thld,
200' left of course.

Terrain 30' MSL,
244' from thld,
172' left of course.

Terrain 597' MSL,
1.91 NM from thld,
1118' left of course.



EMERG SAFE ALT 100 NM 6700



| | | | |
|-------------------|----|------|----|
| ELEV | 14 | THRE | 14 |
| | | | |
| REIL Rwy 9 and 27 | | | |

| CATEGORY | A | B | C | D |
|------------|------------------------|---|-------------------------|-------------------|
| LNAV MDA | 1320-2½ 1306 (1400-2½) | | 1320-3 1306 (1400-3) | NOT AUTHORIZED |
| * CIRCLING | 1320-2½ 1306 (1400-2½) | | 1320-3 1306 (1400-3) | NOT AUTHORIZED |

RNAV (GPS) RWY 27