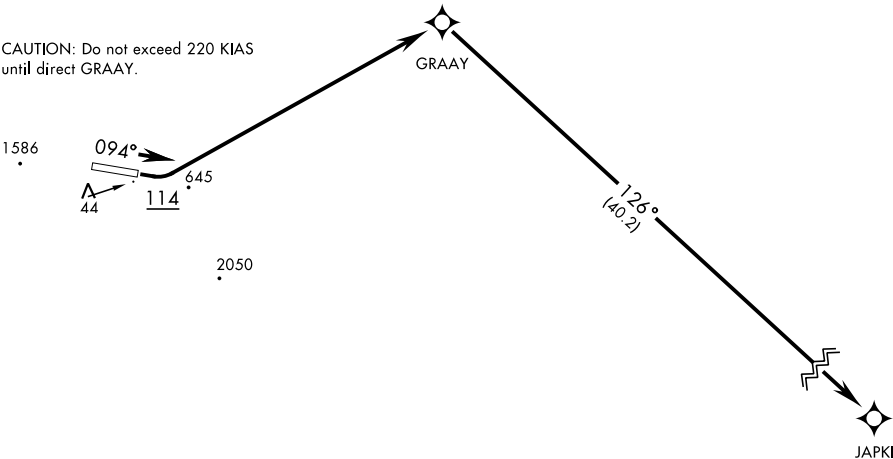


| | | | | | | | | | | | |
|------------------|--|-------------|--|-------------------------------|----------|-----|-----|------|------|------|------|
| ANCHORAGE CENTER | | RNAV1 - GPS | | Rwy | Knots | 60 | 120 | 180 | 240 | 300 | 360 |
| 119.65 363.25 | | | | 9 | V/V(fpm) | 362 | 724 | 1086 | 1448 | 1810 | 2172 |
| KOTZEBUE RADIO ★ | | | | Minimum climb gradient to 600 | | | | | | | |
| 122.3 | | | | | | | | | | | |
| CTAF | | | | | | | | | | | |
| 126.2 | | | | | | | | | | | |

NOT FOR CIVIL USE

FOR USE BY MILITARY CERTIFIED
AIRCREWS OR AUTHORIZED
CONTRACT AIRCRAFT ONLY

CAUTION: Do not exceed 220 KIAS
until direct GRAAY.



WARNING: High terrain within 2 NM
of departure end of runway. Prompt
compliance with departure instructions
is essential to flight safety. Do not delay
initial turn at 114°.

Night operations not authorized.

Procedure NA for CAT E aircraft.

Uncontrolled Airspace below 700' AGL
within 7 NM of Cape Lisburne airport.

Takeoff minimums: Rwy 9, standard with
minimum climb or 362ft/NM to 600'.

Use of T228 airway requires aircraft to be
equipped with TSO-145a/146a capability.



DEPARTURE ROUTE DESCRIPTION

TAKEOFF RWY 9: Climb on heading 094° to 114, then climbing left turn direct GRAAY, then
track 126° to JAPKI, maintain 8000 or as assigned by ATC.

TAKEOFF RWY 27: NOT AUTHORIZED