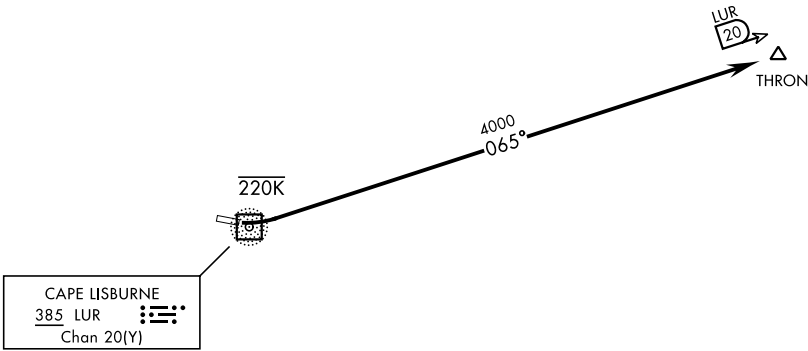


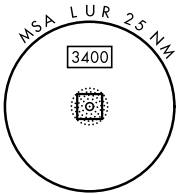
ANCHORAGE CENTER  
119.65 363.25  
KOTZEBUE RADIO ★  
122.3  
CTAF  
126.2

MILITARY CERTIFIED  
AIRCREWS OR AUTHORIZED  
CONTRACT AIRCRAFT ONLY  
NOT FOR CIVIL USE  
NIGHT OPERATIONS NOT AUTHORIZED.



CAUTION: For Rwy 9, do not exceed 220 KIAS until intercepting LUR 065°  
Procedure not authorized for CAT DE aircraft.  
Uncontrolled airspace below 700' AGL within 7 NM of Cape Lisburne airport.  
WARNING: High terrain within 2 NM of DER requiring prompt compliance with departure procedure instructions, do not delay start of initial turn.

2142



DEPARTURE ROUTE DESCRIPTION

TAKEOFF RWY 9: Turn left within ½ mile of departure end and intercept LUR 065° outbound to THRON. Maintain 4000 or ATC assigned altitude.

TAKEOFF RWY 27: Not authorized.

AK, 12 JUN 2025 to 07 AUG 2025

AK, 12 JUN 2025 to 07 AUG 2025