


NDB/DME RWY 15

NDB/DME EHM 385 Chan 18 (Y)	APCH CRS 182°	Rwy ldg TDZE Arpt Elev 3945 456 531
---	-------------------------	---

[USAF]

CAPE NEWENHAM LRRS (PAEH)

<div> Night operations not authorized.</div>	MISSED APPROACH: Climbing right turn to 4500, intercept EHM NDB 002° bearing to ELPEE and hold, continue climb in holding to 4500.
ANCHORAGE CENTER 124.2 251.1	CAPE NEWENHAM RADIO 126.2

MILITARY CERTIFIED
AIRCRAFTS OR AUTHORIZED
CONTRACT AIRCRAFT
ONLY

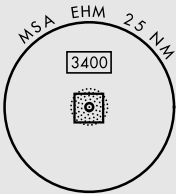
NOT FOR CIVIL USE

CAUTION:
1. Rwy located on slope of 2306' mountain.
High terrain both sides and S end of Rwy.

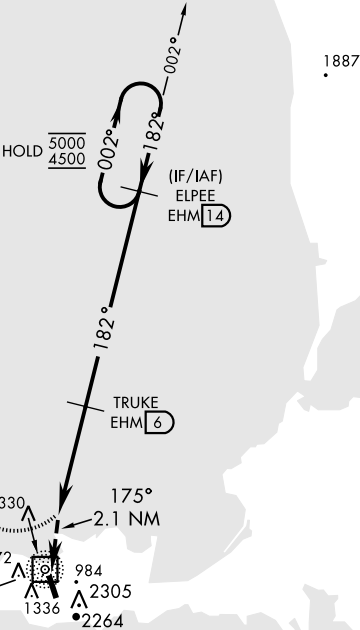
2. Successful go-around improbable
if initiated past the MAP.

Uncontrolled Airspace below 700' AGL
within 7 NM of Cape Newenham airport.


Terrain, 235' MSL, 200' from threshold,
1611' left of course.



CAPE NEWENHAM
385 EHM
Chan 18 (Y)



EMERG SAFE ALT 100 NM 7100

 ELPEE EHM 14

4500
brg 002°

VGSI and descent angles
not coincident (VGSI 3.00/TCH 45)

ELPEE 14

5000
182°
4500

175°

TRUKE 6

2200

182°

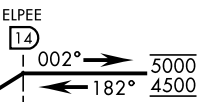
3.00°
TCH 41

2.1 NM

4 NM

ELEV 531

TDZE 456



175°

352

7.7% UP

3945 x 100

33

CATEGORY	A	B	C	D
S-15	1240-2½	784	(800-2½)	NOT AUTHORIZED
CIRCLING	NOT AUTHORIZED			

NDB/DME RWY 15

AK, 12 JUN 2025 to 07 AUG 2025

AK, 12 JUN 2025 to 07 AUG 2025