

ANCHORAGE CENTER
124.2 251.1
CAPE NEWENHAM RADIO
126.2

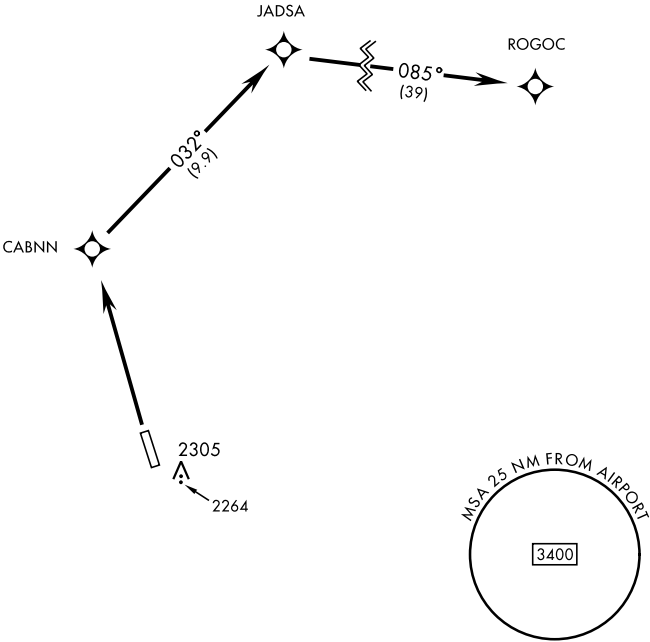
MILITARY CERTIFIED
AIRCREWS OR AUTHORIZED
CONTRACT AIRCRAFT
ONLY

NOT FOR CIVIL USE

Uncontrolled Airspace below 700' AGL
within 7 NM of Cape Newenham airport.

Night operations not authorized.

CAUTION:
High terrain both sides and south
end of runway.



AK, 12 JUN 2025 to 07 AUG 2025

AK, 12 JUN 2025 to 07 AUG 2025

DEPARTURE ROUTE DESCRIPTION

TAKEOFF RWY 15: NA

TAKEOFF RWY 33: Climb to 5000 direct CABNN, then via track 032° to JADSA, then via track 085° to ROGOC, join T223.