

VOR/DME or TACAN RWY 28

VORTAC AWK <b>113.5</b> Chan <b>82</b>	APCH CRS <b>280°</b>	Rwy Idg TDZE <b>20</b> Arpt Elev <b>23</b>
--	-------------------------	--

[USAF]

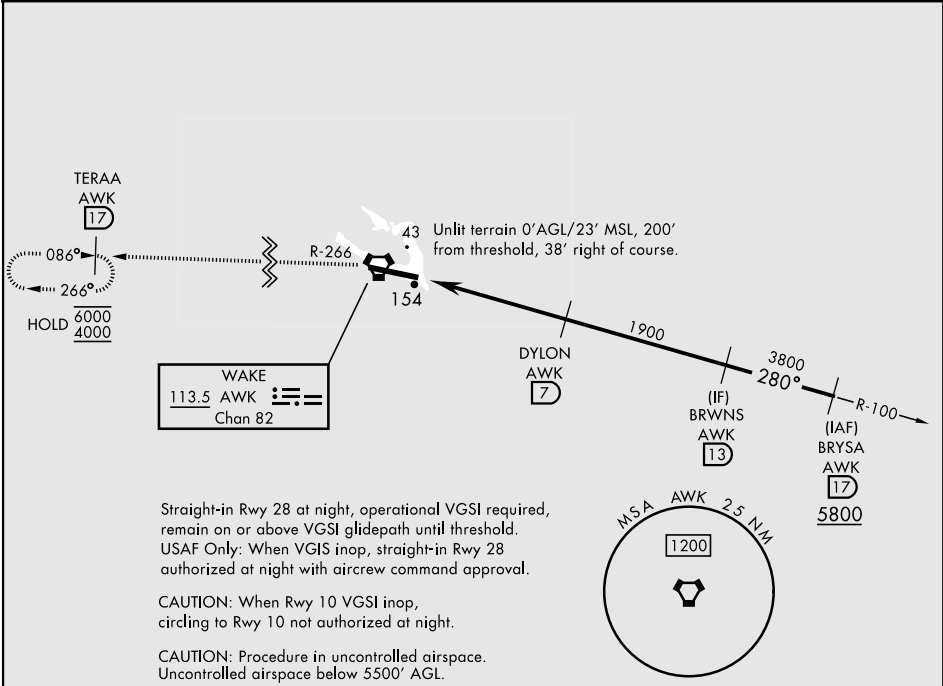
WAKE ISLAND AFLD (PWAK)

RNAV or RADAR required

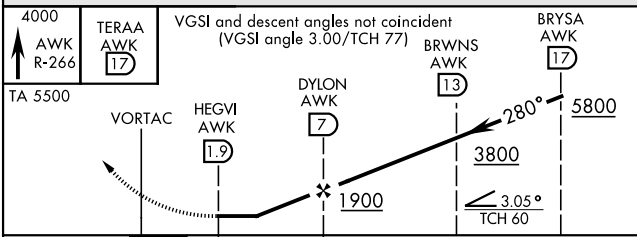
\* Circling not authorized N of Rwy 10-28.  
Rwy 28 helicopter visibility reduction below  
1 SM not authorized.

MISSED APPROACH: Climbing to 4000 on AWK VORTAC R-266  
direct TERAA and hold.

CONTACT WAKE ISLAND OPERATIONS FOR ADVISORY SERVICES  
**128.0 349.4**



EMERG SAFE ALT 100 NM 1200



ELEV 23	TDZE 20
---------	---------

280°

65

9844 x 150

28

154

11.4

HIRL Rwy 10-28  
REIL Rwy 10-28

VOR/DME or TACAN RWY 28

PAC, 12 JUN 2025 to 07 AUG 2025

PAC, 12 JUN 2025 to 07 AUG 2025