

RNAV (GPS) RWY 28

APCH CRS	Rwy Idg	9844
276°	TDZE	20
	Arpt Elev	23

- (USAF)

WAKE ISLAND AFLD (PWAK)

RNP APCH-GPS

T * Circling not authorized N of Rwy 10-28.

MISSED APPROACH: Climbing to 4000 direct DUPUF and hold. Continue climb-in-hold to 4000.

WAKE OPS
128.0 349.4

CAUTION: Procedure in uncontrolled airspace. Uncontrolled airspace below 5500' AGL.

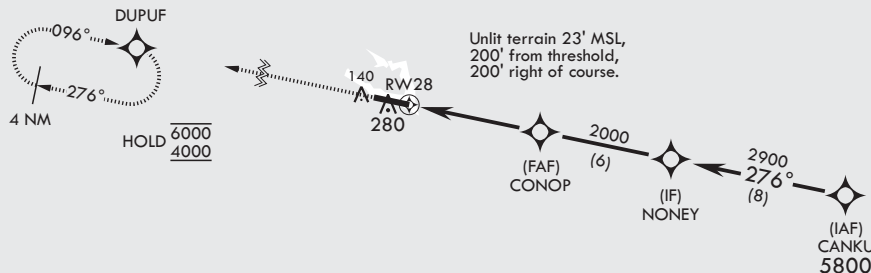
Contact Wake Island Operations
for advisory services.

CAUTION: When Rwy 10 VGSI inop, circling to Rwy 10 not authorized at night.

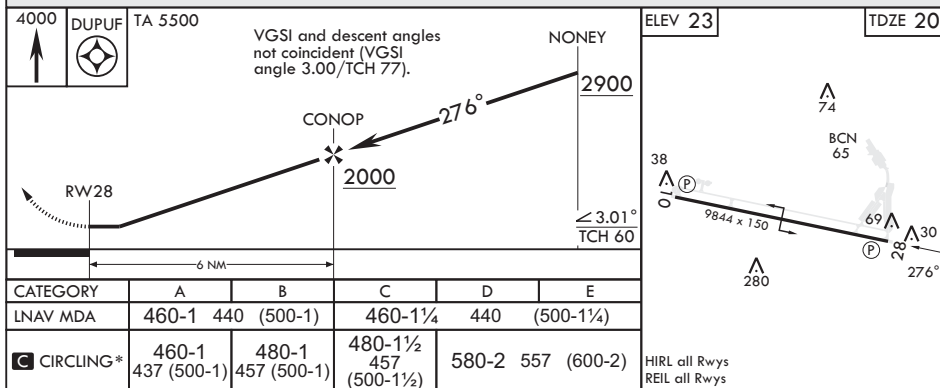
RWY 28 helicopter
visibility reduction below
1 SM not authorized.

Straight-in Rwy 28 at night, operational
VGSi required, remain on or above
VGSi glidepath until threshold

USAF Only: When VGSI Inop, Straight-in Rwy 28 authorized at night with aircrew command approval.



EMERG SAFE ALT 100 NM 1200



WAKE ISLAND, WAKE ISLAND

19°17'N - 166°38'E

WAKE ISLAND AFLD (PWAK)

Amdt 3 18APR24
TERPS

RNAV (GPS) RWY 28

PAC, 12 JUN 2025 to 07 AUG 2025

PAC, 12 JUN 2025 to 07 AUG 2025