

YIGO, GUAM I, GUAM

TACAN Z RWY 06L

TACAN UAM Chan <b>54</b>	APCH CRS <b>065°</b>	Rwy Idg <b>10,528</b> TDZE <b>539</b> Arpt Elev <b>617</b>
-----------------------------	-------------------------	--

- (USAF)

ANDERSEN AFB (PGUA)

RADAR or DME required.

**T** \* When ALS inop, increase CAT AB RVR to 55, vis to 1 mile, CAT CDE vis 1 3/8 miles.

\*\* Circling not authorized NW of Rwy 06L-24R.

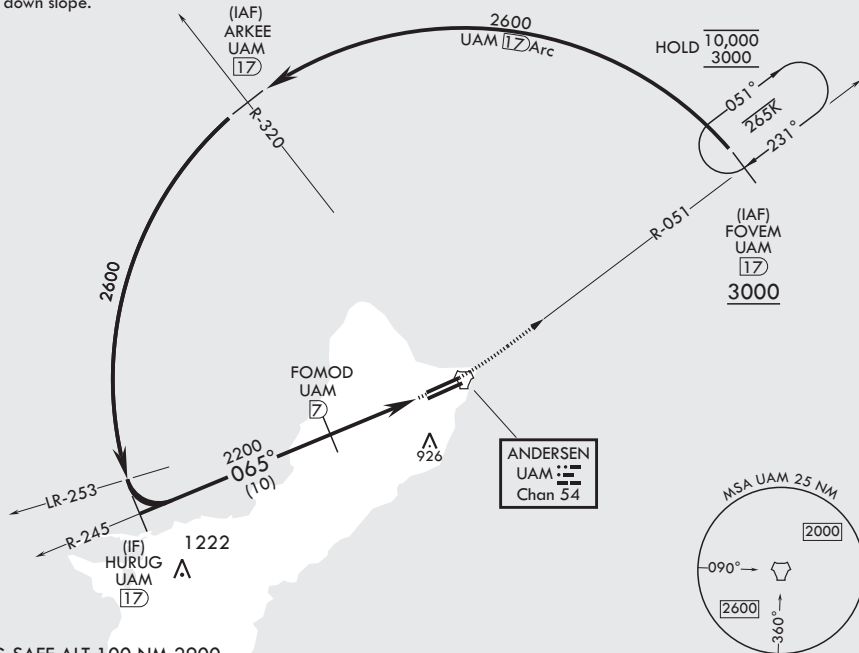
$A_2$  

**MISSED APPROACH:** Climb to 3000, intercept UAM R-051 to FOVEM and hold.

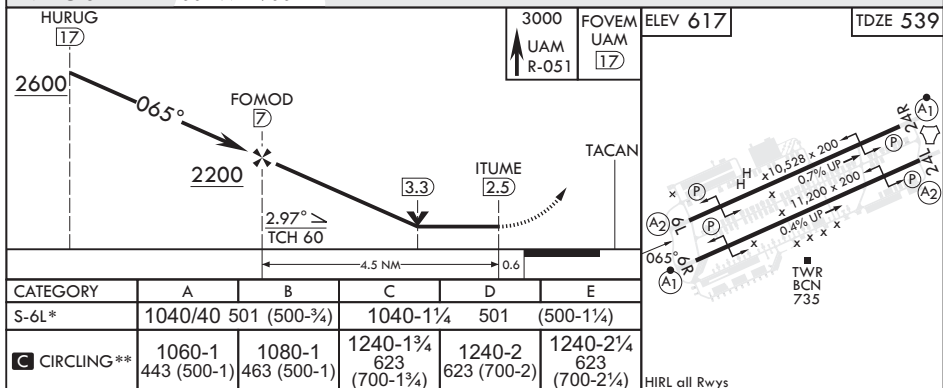
ATIS 118.175 254.325	GUAM APP CON/DEP CON 119.8 269.0	TOWER 126.2 233.7	GND CON 121.7 275.8	CLNC DEL 126.725 256.7
-------------------------	-------------------------------------	----------------------	------------------------	---------------------------

**CAUTION:** Environmentally Sensitive Area. Flights along Andersen cliffline restricted to 1000' AGL or above

All touchdown zones have a 1.0% down slope.



EMERG SAFE ALT 100 NM 2900



YIGO, GUAM I, GUAM

13°35'N - 144°56'E

ANDERSEN AFB (PGUA)

Amdt 3 30NOV23  
TERPS

TACAN Z RWY 06L

PAC, 12 JUN 2025 to 07 AUG 2025

PAC, 12 JUN 2025 to 07 AUG 2025