

YIGO, GUAM I, GUAM

TACAN Z RWY 24L

TACAN UAM Chan 54	APCH CRS 256°	Rwy Idg TDZE Arpt Elev	11,200 607 617
----------------------	------------------	------------------------------	----------------------

- (USAF)

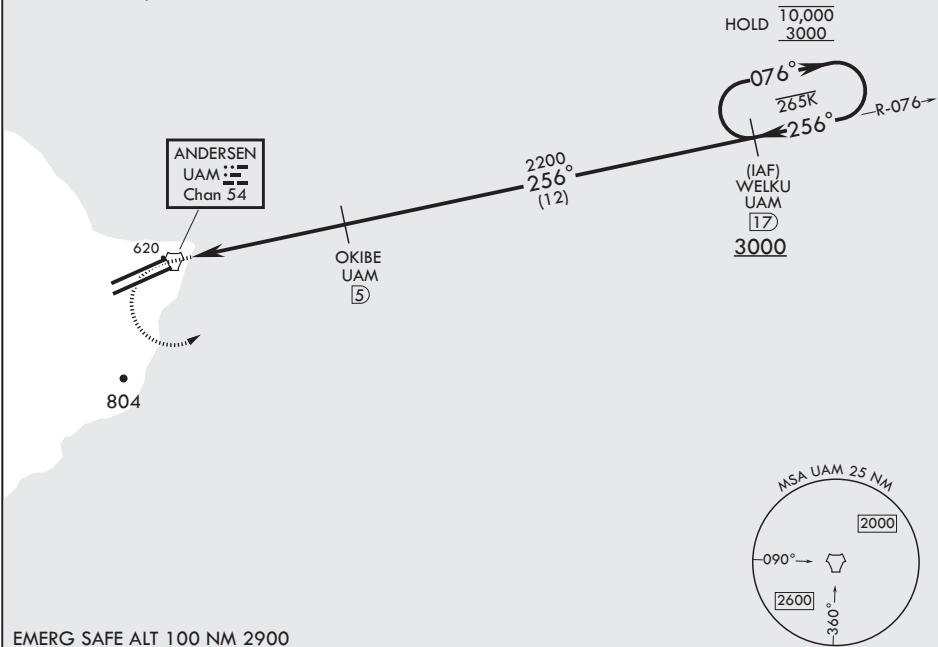
ANDERSEN AFB (PGUA)

RADAR or DME required.	SALS (A2)	MISSED APPROACH: Climb to 1100, then climbing left turn to 3000 to intercept UAM R-076 to WELKU and hold.
* When ALS inop, increase CAT AB RVR to 55, vis to 1 mile; CAT CDE RVR to 50, vis to 1 mile. ** Circling not authorized NW of Rwy 6L-24R.		

ATIS 118.175 254.325	GUAM APP CON/DEP CON 119.8 269.0	TOWER 126.2 233.7	GND CON 121.7 275.8	CLNC DEL 126.725 256.7
-------------------------	-------------------------------------	----------------------	------------------------	---------------------------

CAUTION: Environmentally Sensitive Area Flights along Andersen cliff line restricted to 1000' AGL or above.

All touchdown zones have a 1.0% down slope.



EMERG SAFE ALT 100 NM 2900

1100 ↑ UAM R-076	3000 WELKU UAM 17	WELKU 17	076° →	10,000 3000	ELEV 617	TDZE 607
CATEGORY	A	B	C	D	E	
S-24L*	940/40 333 (400-¾)		940/45 333 (400-¾)			
CIRCLING**	1060-1 443 (500-1)	1080-1 463 (500-1)	1240-1¾ 623 (700-1¾)	1240-2 623 (700-2)	1240-2¼ 623 (700-2¼)	

YIGO, GUAM I, GUAM

13°35'N - 144°56'E

ANDERSEN AFB (PGUA)

Amdt 2 17JUN21  
TERPS

TACAN Z RWY 24L

PAC, 12 JUN 2025 to 07 AUG 2025

PAC, 12 JUN 2025 to 07 AUG 2025