

YIGO, GUAM I, GUAM

TACAN Y RWY 06L

VORTAC UNZ 115.8 Chan T05	APCH CRS 053°	Rwy ldg TDZE Arpt Elev	10,528 539 617
---------------------------------	------------------	------------------------------	----------------------

- (USAF)

ANDERSEN AFB (PGUA)

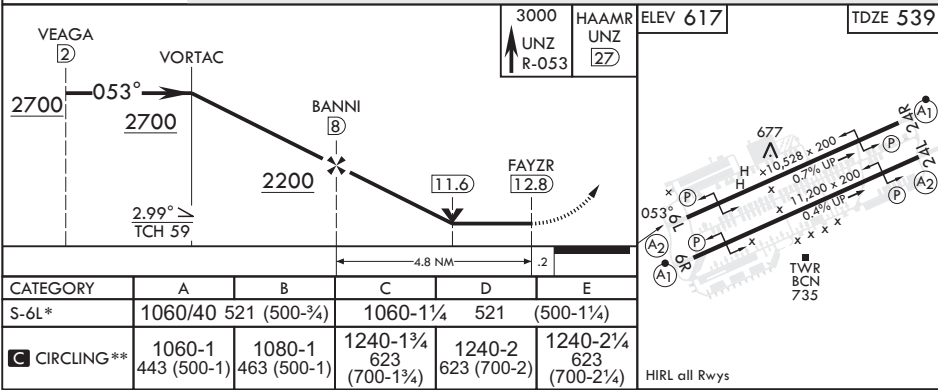
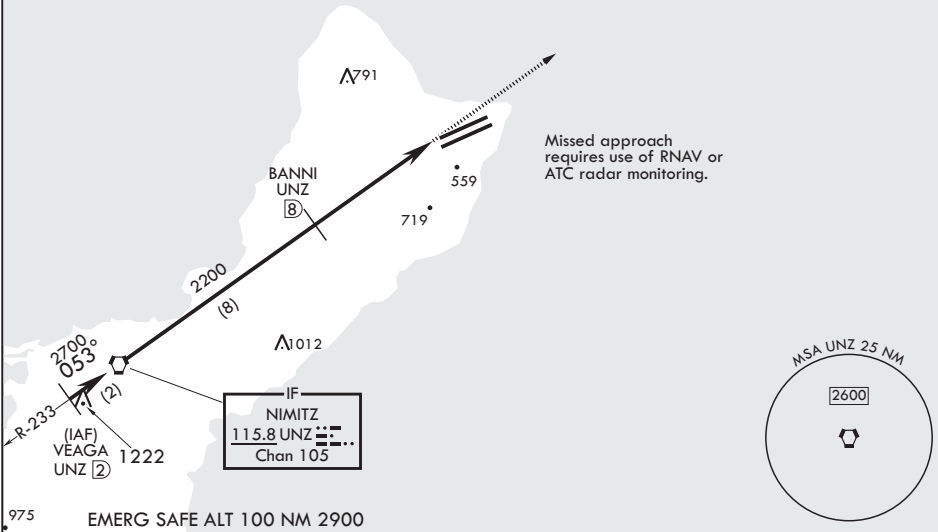
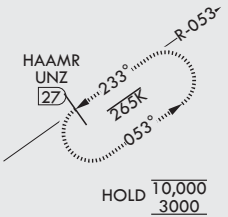
RADAR or DME required	SALS (A2)	MISSED APPROACH: Climb to 3000, intercept UNZ R-053 to HAAMR and hold.
-----------------------	--------------	--

* When ALS inop, increase CAT AB RVR to 55 and vis to 1 mile, CAT CDE vis to 1 1/2 miles.
** Circling not authorized NW of Rwy 06L-24R.

ATIS 118.175 254.325	GUAM APP CON/DEP CON 119.8 269.0	TOWER 126.2 233.7	GND CON 121.7 275.8	CLNC DEL 126.725 256.7
-------------------------	-------------------------------------	----------------------	------------------------	---------------------------

CAUTION: Environmentally Sensitive Area Flights along Anderson cliff line restricted to 1000' AGL or above.

All touchdown zones have a 1.0% down slope.



YIGO, GUAM I, GUAM

13°35'N - 144°56'E

ANDERSEN AFB (PGUA)

Amdt 3 10AUG23
TERPS

TACAN Y RWY 06L

PAC, 12 JUN 2025 to 07 AUG 2025

PAC, 12 JUN 2025 to 07 AUG 2025