

YIGO, GUAM I, GUAM

TACAN Y RWY 24L

VORTAC UNZ 115.8 Chan T05	APCH CRS 236°	Rwy Idg TDZE Arprt Elev	11,200 607 617
---------------------------------	------------------	-------------------------------	----------------------

- (USAF)

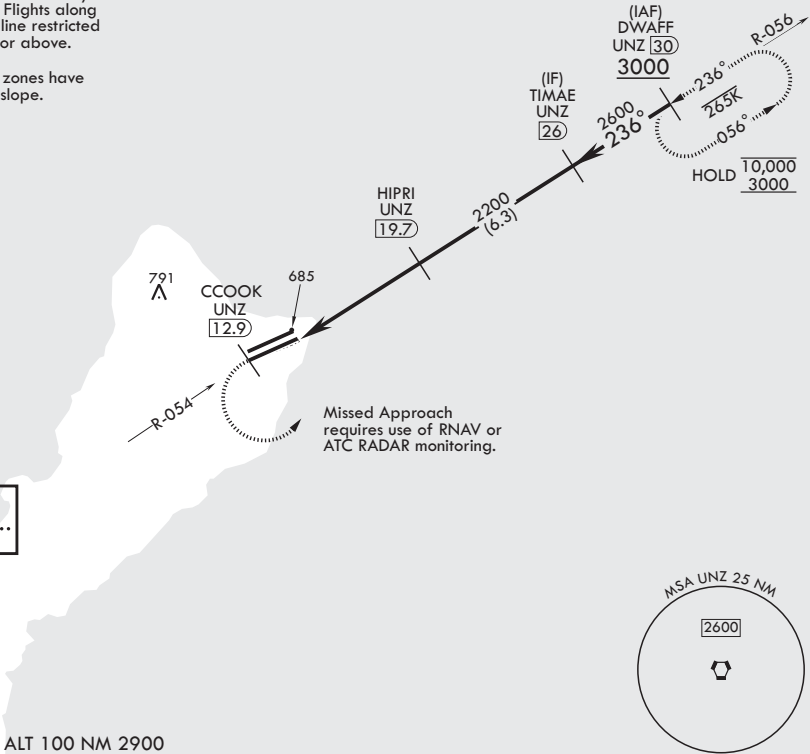
ANDERSEN AFB (PGUA)

<p>⚠ * When ALS inop increase CAT AB RVR to 55, vis to 1 mile; CAT CDE RVR to 50, vis to 1 mile. ** Circling not authorized NW of Rwy 06L-24R.</p>	<p>SALS A2</p>	<p>MISSED APPROACH: Climb to 3000 direct CCOOK, then climbing left turn to intercept UNZ R-056 to DWAFF and hold.</p>
--	--------------------	---

ATIS 118.175 254.325	GUAM APP CON/DEP CON 119.8 269.0	TOWER 126.2 233.7	GND CON 121.7 275.8	CLNC DEL 126.725 256.7
-------------------------	-------------------------------------	----------------------	------------------------	---------------------------

CAUTION: Environmentally Sensitive Area Flights along Andersen cliff line restricted to 1000' AGL or above.

All touchdown zones have a 1.0% down slope.



EMERG SAFE ALT 100 NM 2900

3000 ↑	CCOOK UNZ 12.9	UNZ R-056	DWAFF UNZ 30	DWAFF 30	ELEV 617	TDZE 607
VORTAC	WEVUS 14.8	15.6	HIPRI 19.7	TIMAE 26	236°	3000
			2200	2600		
				≤ 2.94° TCH 43		
CATEGORY	A	B	C	D	E	
S-24L*	940/40	333 (400-¾)	940/45	333	(400-¾)	
CIRCLING**	1060-1 443 (500-1)	1080-1 463 (500-1)	1240-1¾ 623 (700-1¾)	1240-2 623 (700-2)	1240-2¼ 623 (700-2¼)	
						HIRL all Rws

YIGO, GUAM I, GUAM

13°35'N - 144°56'E

ANDERSEN AFB (PGUA)

Amdt 2 17JUN21
TERPS

TACAN Y RWY 24L

PAC, 12 JUN 2025 to 07 AUG 2025

PAC, 12 JUN 2025 to 07 AUG 2025