

YIGO, GUAM I, GUAM

RNAV (GPS) RWY 06L

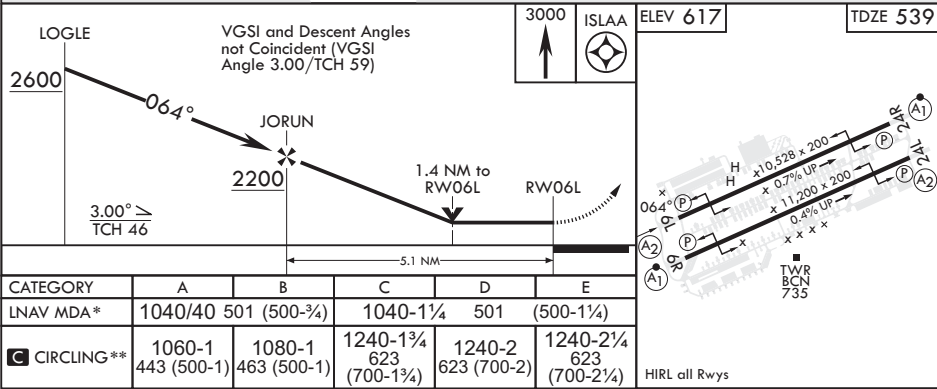
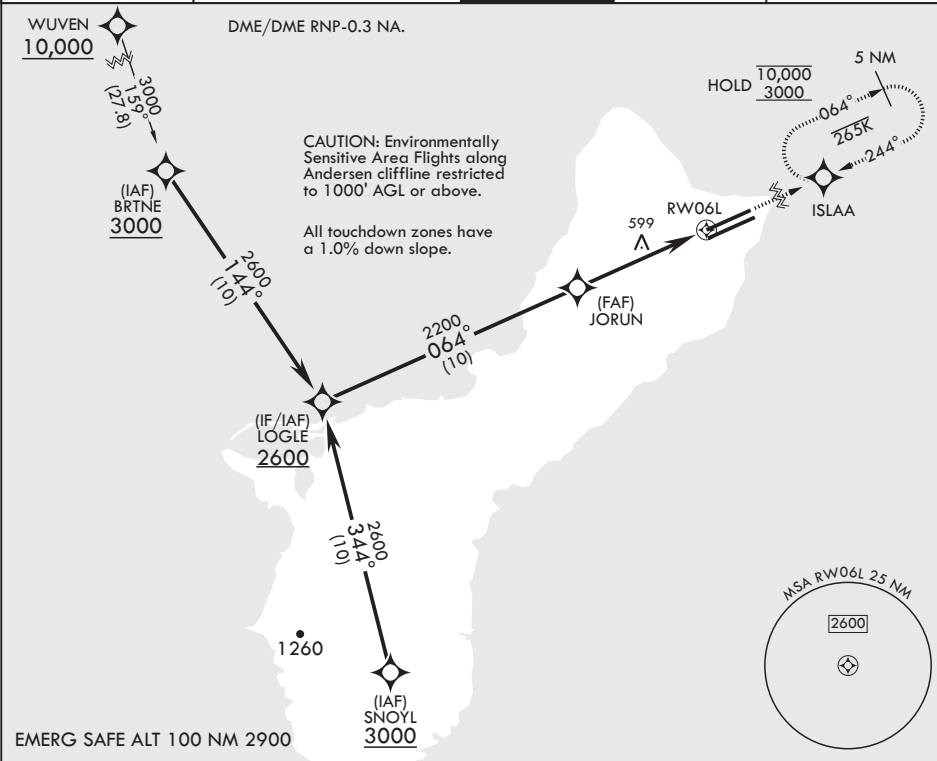
APCH CRS	Rwy Idg	10,528
064°	TDZE	539
	Arprt Elev	617

- (USAF)

ANDERSEN AFB (PGUA)

RNP APCH	SALS	MISSED APPROACH: Climb to 3000 direct ISLAA and hold.
<p>▼ * When ALS inop increase CAT AB RVR to 55, vis to 1 mile; CAT CDE vis to 1 3/8 miles. ** Circling not authorized NW of Rwy 06L-24R. Circling not authorized to Rwys 06L and 24R.</p>	<p>(A2)</p>	

ATIS 118.175 254.325	GUAM APP CON/DEP CON 119.8 269.0	TOWER 126.2 233.7	GND CON 121.7 275.8	CLNC DEL 126.725 256.7
-------------------------	-------------------------------------	----------------------	------------------------	---------------------------



YIGO, GUAM I, GUAM

13°35'N - 144°56'E

ANDERSEN AFB (PGUA)

Amdt 1 17JUN21
TERPS

RNAV (GPS) RWY 06L

PAC, 12 JUN 2025 to 07 AUG 2025

PAC, 12 JUN 2025 to 07 AUG 2025