

YIGO, GUAM I, GUAM

ILS Z or LOC/DME Z RWY 06L

LOC I-AND 109.3	APCH CRS 064°	Rwy Idg 10,528 TDZE 539 Arpt Elev 617
---------------------------	-------------------------	--

AL-2147 [USAF]

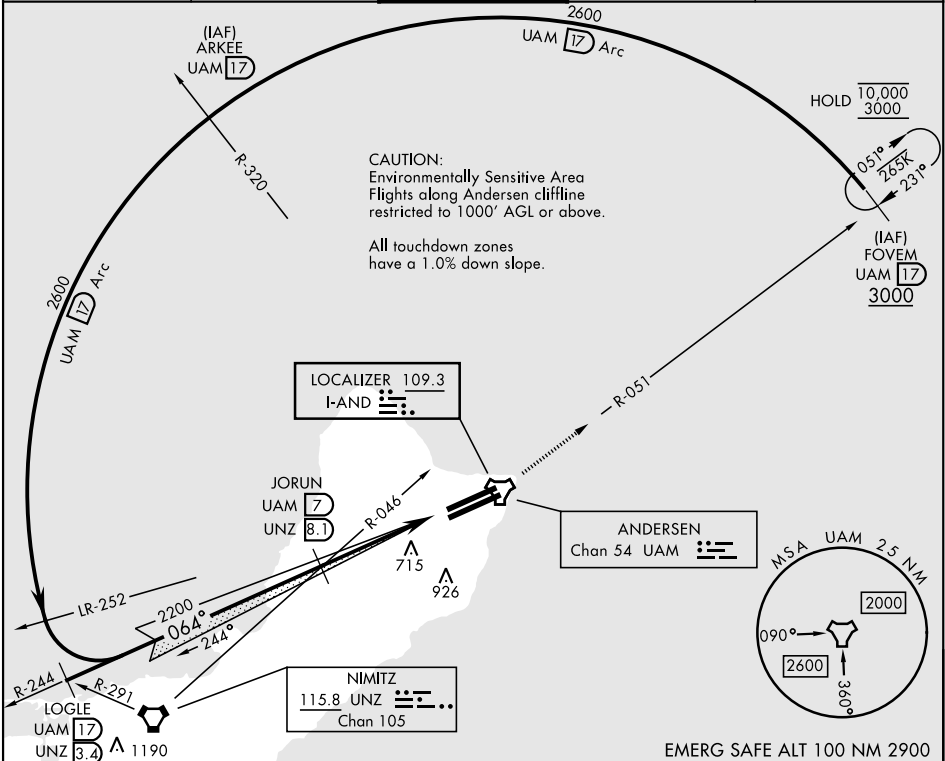
ANDERSEN AFB (PGUA)

▼ * When ALS inop, increase CAT AB RVR to 55, vis to 1 mile; CAT CDE vis to 1½ miles.
** Circling not authorized NW of Rwy 06L-24R.

SALS

MISSED APPROACH: Climb to 3000, intercept UAM R-051 to FOVM and hold.

ATIS 118.175 254.325	GUAM APP CON 119.8 269.0	TOWER 126.2 233.7	GND CON 121.7 275.8	CLNC DEL 126.725 256.7
--------------------------------	------------------------------------	-----------------------------	-------------------------------	----------------------------------



EMERG SAFE ALT 100 NM 2900

VGSI and ILS Glidepath not Coincident (VGSI Angle 3.00/TCH 59).

ELEV 617 TDZE 539

CATEGORY	A	B	C	D	E
S-ILS 06L	739/40		200 (200-¾)		
S-LOC 06L*	1020/40 481 (500-¾)		1020/60 481 (500-1½)		
CIRCLING**	1060-1 443 (500-1)	1080-1 463 (500-1)	1240-1¾ 623 (700-1¾)	1240-2 623 (700-2)	1240-2¼ 623 (700-2¼)

HRL all rwy's

FAF to MAP 4.5 NM

Knots	60	90	120	150	180
Min:Sec	4:30	3:00	2:15	1:48	1:30

YIGO, GUAM I, GUAM

13°35'N-144°56'E

ANDERSEN AFB (PGUA)

Amdt 1 08SEP22
TERPS

ILS Z or LOC/DME Z RWY 06L

PAC, 12 JUN 2025 to 07 AUG 2025

PAC, 12 JUN 2025 to 07 AUG 2025