

YIGO, GUAM I, GUAM

ILS Z or LOC/DME Z RWY 24R

LOC I-YIG 109.3	APCH CRS 244°	Rwy Idg TDZE Arpt Elev 10,528 617 617
---------------------------	-------------------------	---

AL-2147 [USAF]

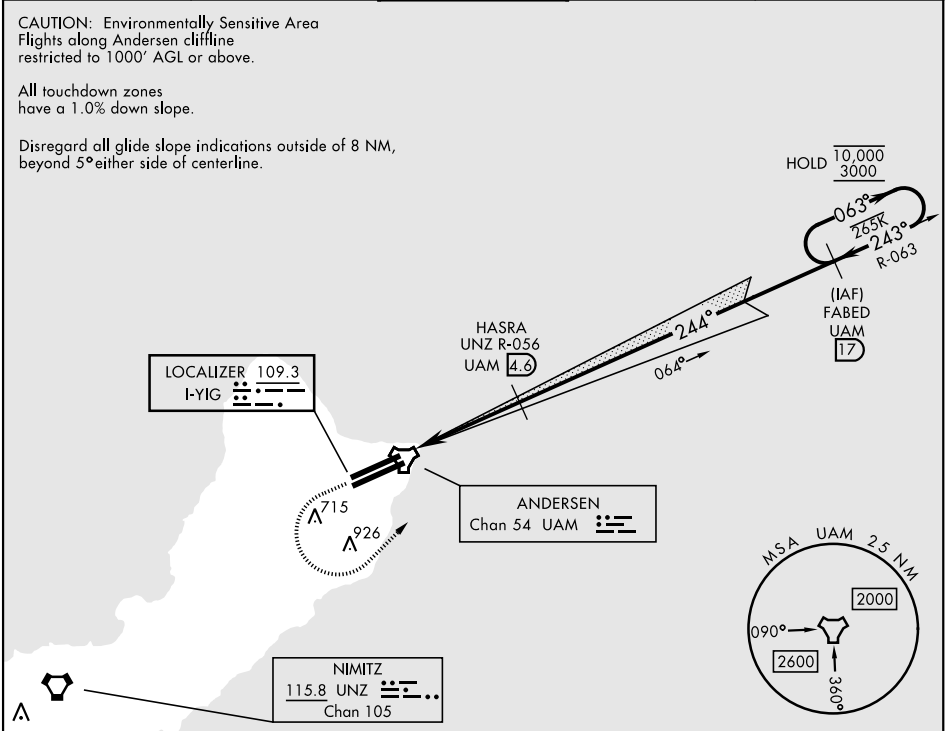
ANDERSEN AFB (PGUA)

⚠ * When ALS inop, increase RVR to 40, vis to ¾ mile.
** When ALS inop, increase RVR to 55, vis to 1 mile.
*** Circling not authorized NW of Rwy 06L-24R.

ALS F-1
(A1)

MISSED APPROACH: Climb to 1100, then climbing left turn to 3000 to intercept UAM R-063 direct FABED and hold.

ATIS 118.175 254.325	GUAM APP CON 119.8 269.0	TOWER 126.2 233.7	GND CON 121.7 275.8	CLNC DEL 126.725 256.7
--------------------------------	------------------------------------	-----------------------------	-------------------------------	----------------------------------



EMERG SAFE ALT 100 NM 2900

1100 3000 FABED UAM 17 UAM R-063

INIME UAM 0.5 HASRA UAM 4.6

063° 244° 2200 10,000 3000 063° 243° 3000

GS 3.00° TCH 56

0.7 NM 4.1 NM

CATEGORY	A	B	C	D	E
S-ILS 24R*	817/24 200 (200-½)				
S-LOC 24R**	940/24 323 (400-½) 940/26 323 (400-½)				
CIRCLING***	1060-1 443 (500-1)	1080-1 463 (500-1)	1240-1¾ 623 (700-1¾)	1240-2 623 (700-2)	1240-2¼ 623 (700-2¼)

HIRL all rwys

ELEV 617 TDZE 617

YIGO, GUAM I, GUAM

13° 35'N-144° 56'E

ANDERSEN AFB (PGUA)

Orig 12AUG21
TERPS

ILS Z or LOC/DME Z RWY 24R

PAC, 12 JUN 2025 to 07 AUG 2025

PAC, 12 JUN 2025 to 07 AUG 2025