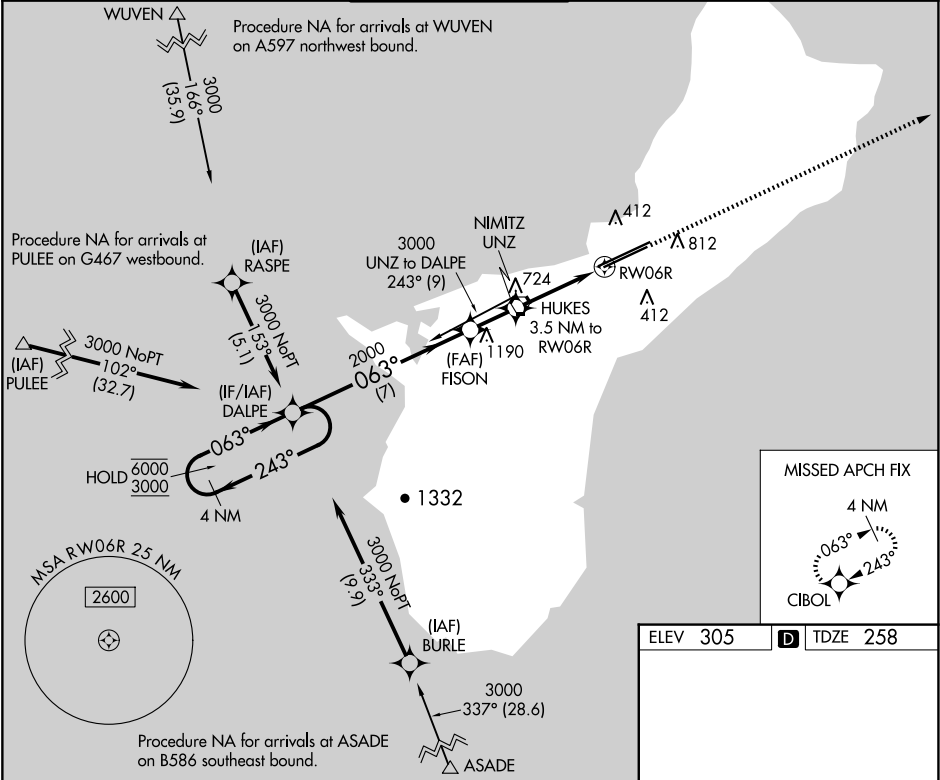


APP CRS	Rwy Idg	10014
063°	TDZE	258
	Apt Elev	305

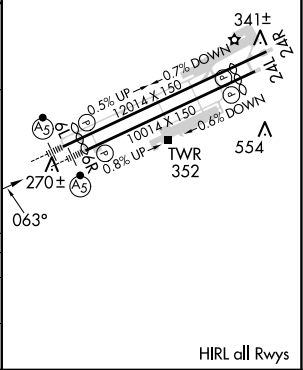
RNAV (GPS) Y RWY 6R

GUAM INTL (GUM)(PGUM)

RNP APCH - GPS. ▼ Rwy 6R helicopter visibility reduction below ¾ SM NA. For inop ALS, increase Cat A and B visibility to 1 SM, and Cat C and D to 2 SM. Circling NA southeast of Rwy 6R-24L.		MALSR 	MISSED APPROACH: Climb to 3000 direct CIBOL and hold.	
ATIS 119.0	GUAM CERAP 119.8 269.0	AGANA TOWER 118.1 340.2	GND CON 121.9 336.4	CLNC DEL 121.9



VGSI and descent angles not coincident (VGSI Angle 3.00/TCH 76).		3000	CIBOL
4 NM Holding Pattern	DALPE	FISON	HUKES 3.5 NM to RW06R 2.1 NM to RW06R
6000 3000 243° 063°	2000	1440	3.11° TCH 55
7 NM		1.8 NM	1.4 NM 2.1 NM
CATEGORY	A	B	C D
RNAV MDA	980-¾ 722 (700-¾)	980-1⅝ 722 (700-1⅝)	
CIRCLING	980-1 675 (700-1)	980-2 675 (700-2)	NA



PAC, 12 JUN 2025 to 07 AUG 2025

PAC, 12 JUN 2025 to 07 AUG 2025