

APP CRS	Rwy Idg	10014
063°	TDZE	258
	Apt Elev	305

RNAV (RNP) Z RWY 6R

GUAM INTL (GUM)(PGUM)

RNP AR APCH - GPS.

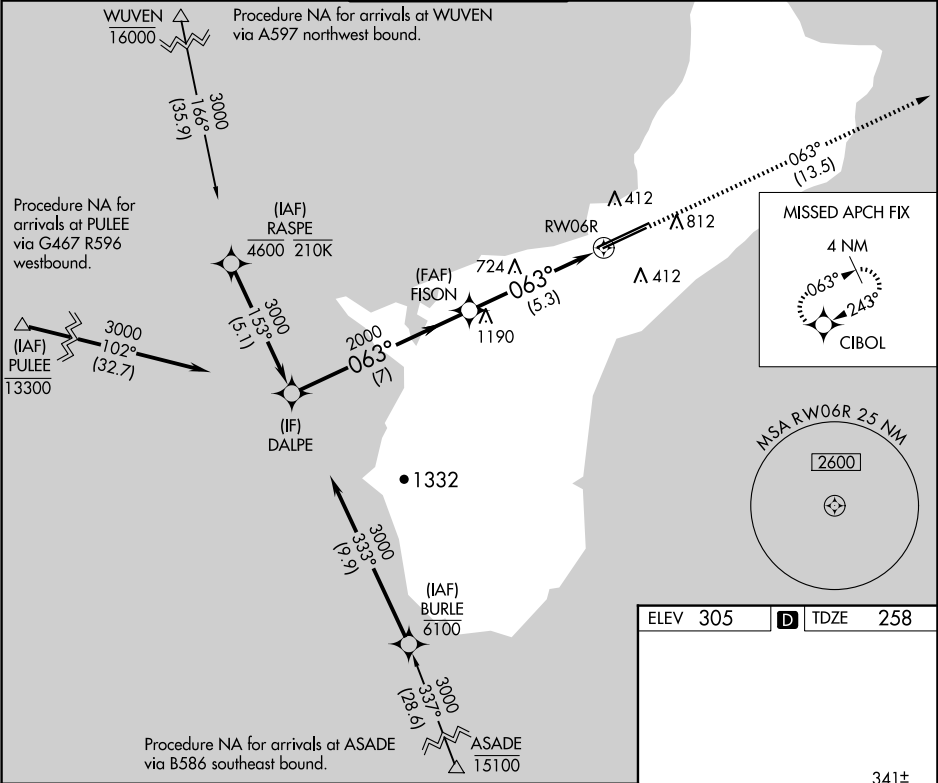
▼

For uncompensated Baro-VNAV systems, procedure NA below 19°C or above 48°C. For inop ALS, increase RNP 0.30 all Cats visibility to 1½ SM. Inop table does not apply to RNP 0.30.*
*Missed approach requires a minimum climb of 285 feet per NM to 1400.

MALSR

MISSED APPROACH: Climb to 3000 via track 063° to CIBOL and hold.

ATIS	GUAM CERAP	AGANA TOWER	GND CON	CLNC DEL
119.0	119.8 269.0	118.1 340.2	121.9 336.4	121.9



ELEV 305	D	TDZE 258
----------	----------	----------

Procedure Turn NA

DALPE

VGSI and RNAV glidepath not coincident (VGSI Angle 3.00/TCH 76).

3000

063°

2000

FISON

3000

CIBOL

GP 3.00° TCH 55

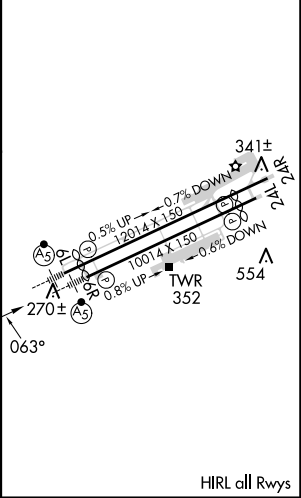
7 NM

5.3 NM

tr 063°

CATEGORY	A	B	C	D
RNP 0.30* DA		511-¾	253 (300-¾)	
RNP 0.30 DA		656-¾	398 (400-¾)	

AUTHORIZATION REQUIRED



PAC, 12 JUN 2025 to 07 AUG 2025

PAC, 12 JUN 2025 to 07 AUG 2025