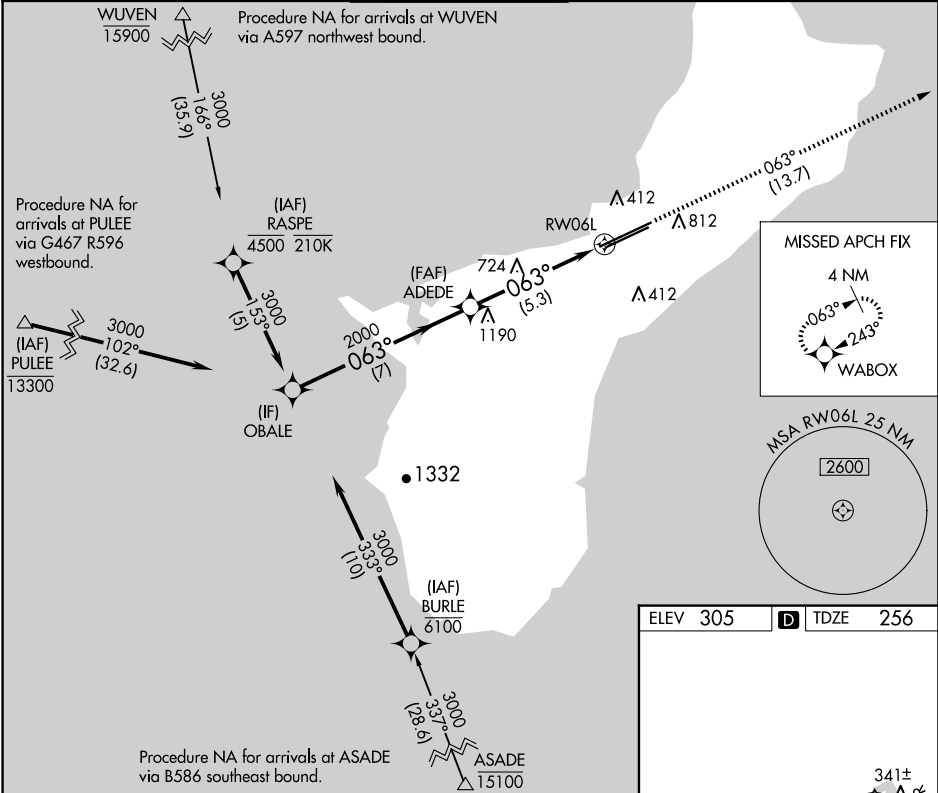


APP CRS	Rwy Idg	11014
063°	TDZE	256
	Apt Elev	305

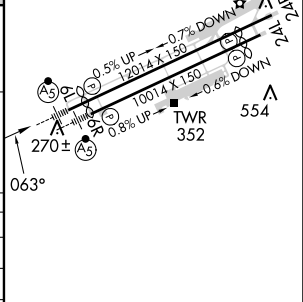
RNAV (RNP) Z RWY 6L
GUAM INTL (GUM)(PGUM)

RNP AR APCH - GPS.	MALSR	MISSED APPROACH: Climb to 3000 via track 063° to WABOX and hold.
▼ For uncompensated Baro-VNAV systems, procedure NA below 19°C or above 48°C. For inop ALS, increase RNP *0.30 all Cats visibility to ¾ SM and RNP 0.30 all Cats visibility to 1½ SM. *Missed approach requires a minimum climb of 276 feet per NM to 1400.		

ATIS	GUAM CERAP	AGANA TOWER	GND CON	CLNC DEL
119.0	119.8 269.0	118.1 340.2	121.9 336.4	121.9



Procedure Turn NA	OBALE	VGSI and RNAV glidepath not coincident (VGSI Angle 3.00/TCH 73)	3000	WABOX
	3000		tr 063°	
GP 3.00° TCH 50				
	7 NM	5.3 NM		
CATEGORY	A	B	C	D
RNP 0.30* DA		514-½	258 (300-½)	
RNP 0.30 DA		656-⅝	400 (400-⅝)	



AUTHORIZATION REQUIRED