

APP CRS 243°	Rwy Idg 8710
	TDZE 293
	Apt Elev 305

RNAV (RNP) Z RWY 24L
GUAM INTL (GUM)(PGUM)

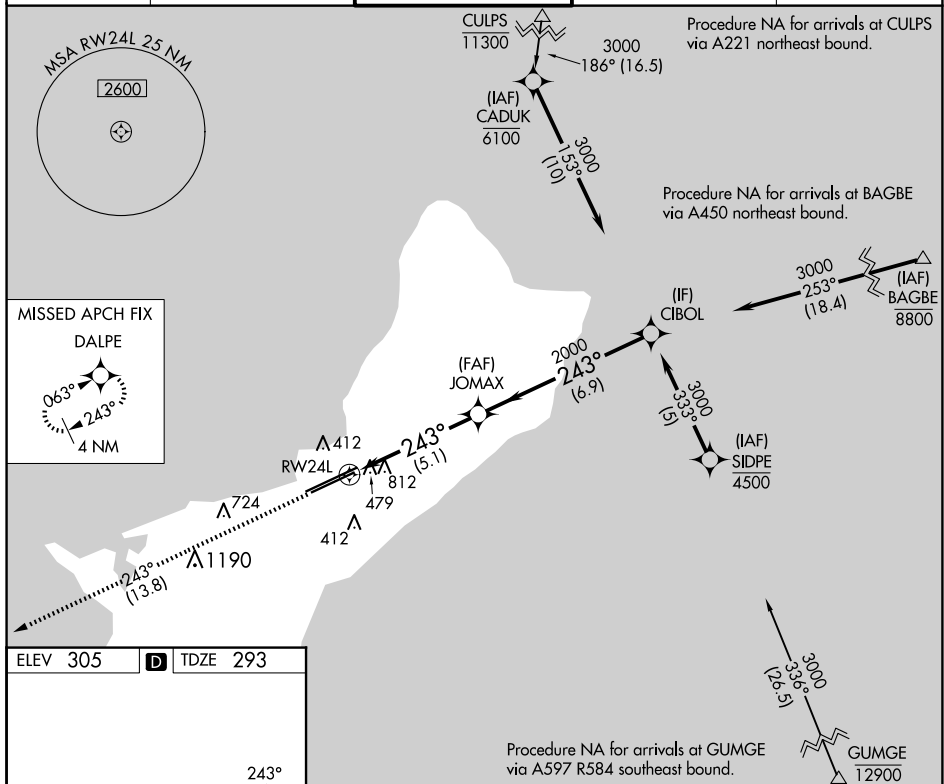
RNP AR APCH - GPS.



For uncompensated Baro-VNAV systems, procedure NA below 19°C or above 48°C.

MISSED APPROACH: Climb to 3000 via track 243° to DALPE and hold.

ATIS 119.0	GUAM CERAP 119.8 269.0	AGANA TOWER 118.1 340.2	GND CON 121.9 336.4	CLNC DEL 121.9
---------------	---------------------------	----------------------------	------------------------	-------------------



HIRL gl Rwy5

270± 341± 352

0.5% UP 0.7% DOWN 0.8% UP 0.6% DOWN

12014 x 150

A9 TWR

VGS and RNAV glidepath not coincident (VGS Angle 3.00/TCH 75).

3000
↑
fr 243°

DALPE

JOMAX
2000

243°

CIBOL
3000

Procedure
Turn
NA

GP 3.00°
TCH 55

5.1 NM

6.9 NM

CATEGORY	A	B	C	D
RNP 0.20 DA	1103-2½ 810 (900-2½)			
RNP 0.30 DA	1140-2½ 847 (900-2½)			

AUTHORIZATION REQUIRED