

LOC/DME I-AWD	APP CRS	Rwy Idg	10014
110.9	063°	TDZE	258
Chan 46		Apt Elev	305

ILS or LOC RWY 6R

GUAM INTL (GUM)(PGUM)

DME or RADAR required.

▼

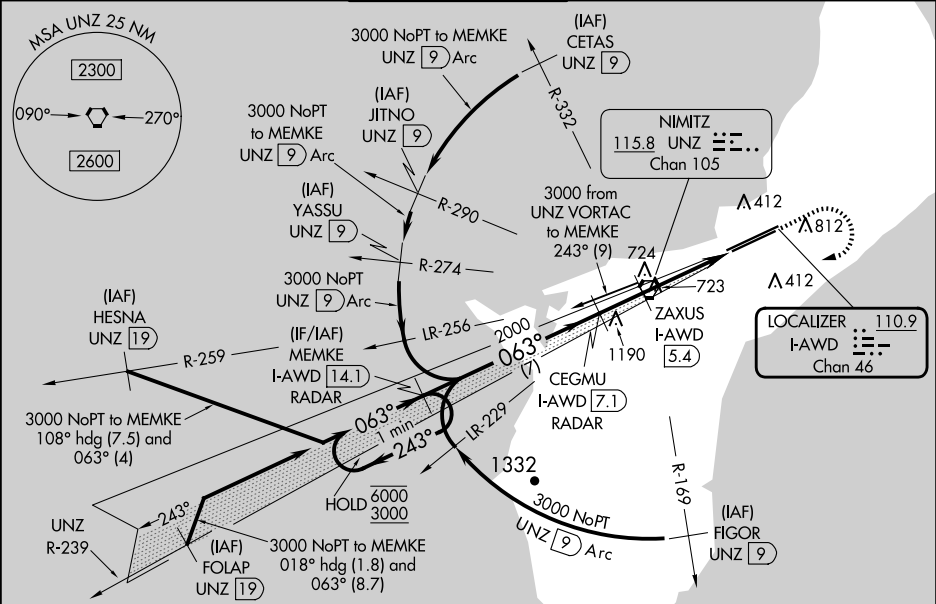
▲

Circling NA southeast of Rwy 6R-24L. Rwy 6R helicopter visibility reduction below ¾ SM NA. Inop table does apply to S-LOC 6R Cat C and D. ZAXUS fix minimums (DME required): For inop ALS, increase S-LOC 6R Cat A and B visibility to 1 SM and Cats C and D to 2 SM.

MALSR

MISSED APPROACH: Climb to 2100 then climbing right turn to 3000 direct UNZ VORTAC and on I-AWD to MEMKE/I-AWD 14.1 DME/RADAR and hold.

ATIS	GUAM CERAP	AGANA TOWER	GND CON	CLNC DEL
119.0	119.8 269.0	118.1 340.2	121.9 336.4	121.9



VGSI and ILS glidepath not coincident (VGSI Angle 3.00/TCH 76).

One Minute Holding Pattern

MEMKE I-AWD 14.1 RADAR

CEGMU I-AWD 7.1 RADAR

ZAXUS I-AWD 5.4 RADAR

I-AWD 3.9

I-AWD 1.8

Use I-AWD DME when on localizer course.

6000

3000

243°

063°

063°

2000

1440

7 NM

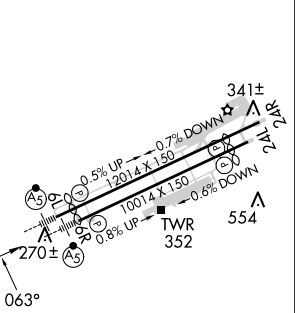
1.7 NM

1.5 NM

2.1 NM

GS 3.00° TCH 57

ELEV 305	TDZE 258
----------	----------



CATEGORY	A	B	C	D
S-ILS 6R	603-¾ 345 (300-¾)			
S-LOC 6R	1440-¾ 1182 (1200-¾)	1440-1 1182 (1200-1)	1440-3 1182 (1200-3)	
◼ CIRCLING	1440-1¼ 1135 (1200-1¼)	1440-1½ 1135 (1200-1½)	1440-3 1135 (1200-3)	NA
ZAXUS FIX MINIMUMS (DME REQUIRED)				
S-LOC 6R	980-¾ 722 (700-¾)	980-1½ 722 (700-1½)		
◼ CIRCLING	980-1 675 (700-1)	980-2 675 (700-2)	NA	

HIRL all Rwys					
FAF to MAP 5.3 NM					
Knots	60	90	120	150	180
Min:Sec	5:18	3:32	2:39	2:07	1:46