



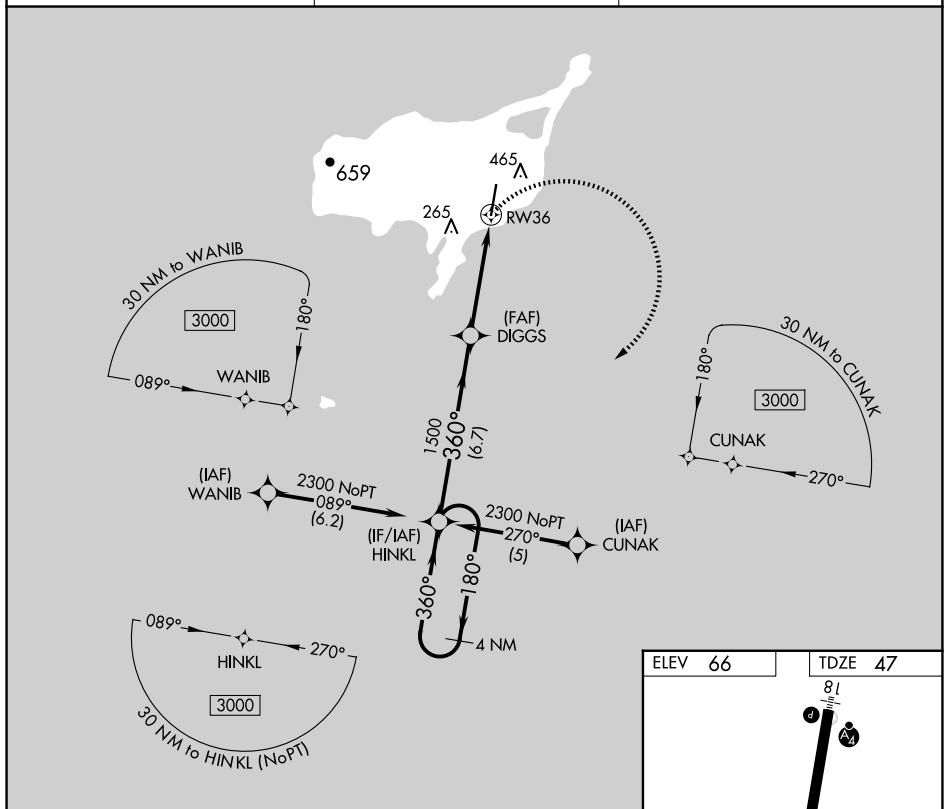


APP CRS 360°	Rwy Ldg TDZE Apt Elev	6500 47 66
------------------------	-----------------------------	---------------------------------------

RNAV (GPS) RWY 36
ST PAUL ISLAND (SNP) (PASN)

RNP APCH.		MALSF	MISSED APPROACH: Climbing right turn to 2300 direct HINKL and hold.
 	Inoperative table does not apply. Circling NA west of Rwy 18-36.	 	
ASOS 135.75		ANCHORAGE CENTER 119.1 339.8	
		CTAF 122.3	



CATEGORY	A	B	C	D
RNAV MDA	840-1 793 (800-1)	840-1¼ 793 (800-1¼)	840-2¼ 793 (800-2¼)	840-2½ 793 (800-2½)
CIRCLING	840-1 774 (800-1)	840-1¼ 774 (800-1¼)	840-2¼ 774 (800-2¼)	840-2½ 774 (800-2½)

