

VOR/DME OTZ	APP CRS	Rwy Idg	5900
115.7	257°	TDZE	15
Chan 104		Apt Elev	15

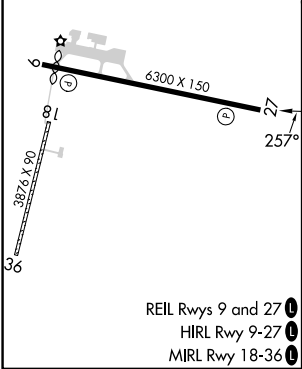
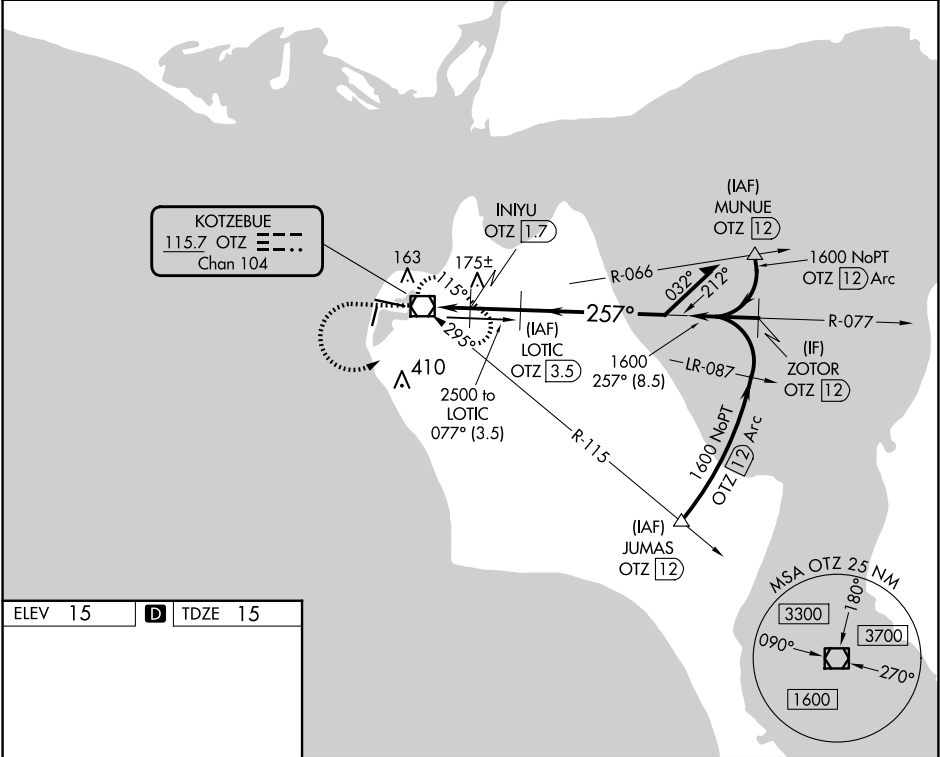
VOR RWY 27
RALPH WIEN MEML (OTZ) (PAOT)

DME required.

⚠ Circling to Rwy 18, 36 NA at night. Rwy 27 helicopter visibility reduction below 1 SM NA. Straight-in Rwy 27 at night, Circling Rwy 27 at night, operational VGS required, remain on or above glidepath until threshold.

MISSED APPROACH: Climb to 1600 then climbing left turn to 2000 direct OTZ VOR/DME and hold, continue climb-in-hold to 2000.

AFIS 135.45	ANCHORAGE CENTER 119.2 263.0	KOTZEBUE RADIO 123.6 (CTAF) 0
----------------	---------------------------------	----------------------------------



1600	2000	OTZ	LOTIC OTZ 3.5	Remain within 10 NM
↑	↶	⬜		
INIYU OTZ 1.7				
OTZ VOR/DME				
920				
077°				
257°				
1600				
0.7 1.7 NM 1.8 NM				
CATEGORY	A	B	C	D
S-27	440-1	425 (500-1)	440-1¼	425 (500-1¼)
⬜ CIRCLING	520-1	505 (600-1)	720-2	720-2¼
			705 (800-2)	705 (800-2¼)

AK, 12 JUN 2025 to 07 AUG 2025

AK, 12 JUN 2025 to 07 AUG 2025