

WAAS CH <b>57941</b> <b>W09A</b>	APP CRS <b>091°</b>	Rwy ldg TDZE <b>5900</b> <b>13</b> Apt Elev <b>15</b>
--	------------------------	--

RNAV (GPS) RWY 9

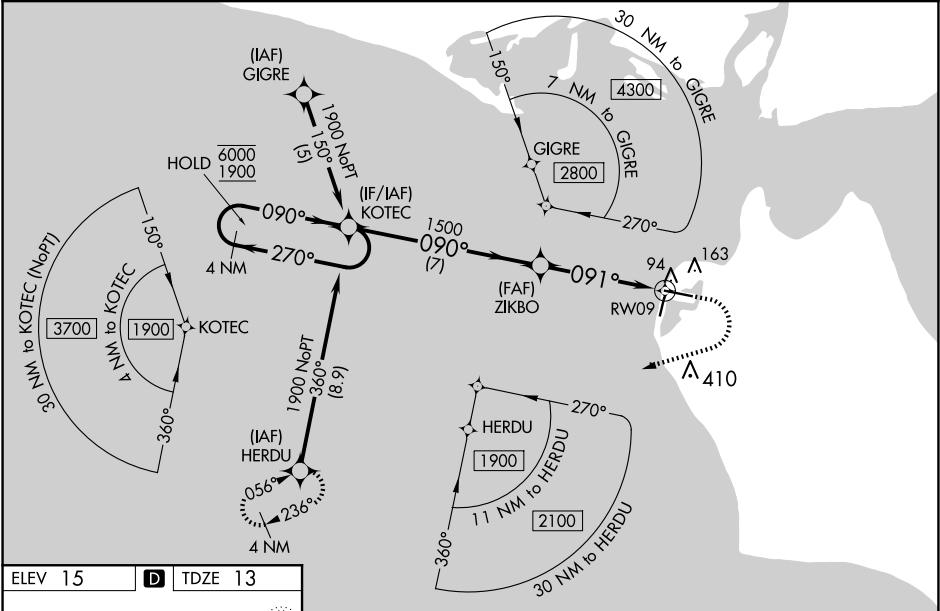
RALPH WIEN MEML (OTZ) (PAOT)

RNP APCH.

Circling Rwy 18, 36 NA at night, Circling Rwy 27 at night, operational VGSi required, remain on or above VGSi glidepath until threshold.  
Rwy 9 helicopter visibility reduction below RVR 4000 NA. For uncompensated Baro-VNAV systems, LNAV/VNAV NA below -20°C or above 54°C.

MISSED APPROACH: Climb to 500 then climbing right turn to 2000 direct HERDU and hold.

AFIS <b>135.45</b>	ANCHORAGE CENTER <b>119.2 263.0</b>	KOTZEBUE RADIO <b>123.6 (CTAF) 0</b>
-----------------------	--	---



ELEV 15    **D**    TDZE 13

REIL Rwy 9 and 27 **0**  
HIRL Rwy 9-27 **0**  
MIRL Rwy 18-36 **0**

4 NM Holding Pattern		KOTEC		ZIKBO		HERDU	
6000 ← 270° 1900 → 090°		090°		1500		* LNAV only	
GP 3.00° TCH 42		7 NM		3.5 NM		* 1 NM to RWY09	
						RWY09	
CATEGORY	A	B	C	D			
LPV DA	263/50			250 (300-1)			
LNAV/ VNAV DA	263/50			250 (300-1)			
LNAV MDA	360/55			347 (400-1)			
<b>C</b> CIRCLING	520-1	505 (600-1)		720-2 705 (800-2)		720-2¼ 705 (800-2 ¼)	