

APP CRS	Rwy Idg	<b>5900</b>
<b>271°</b>	TDZE	<b>15</b>
	Apt Elev	<b>15</b>

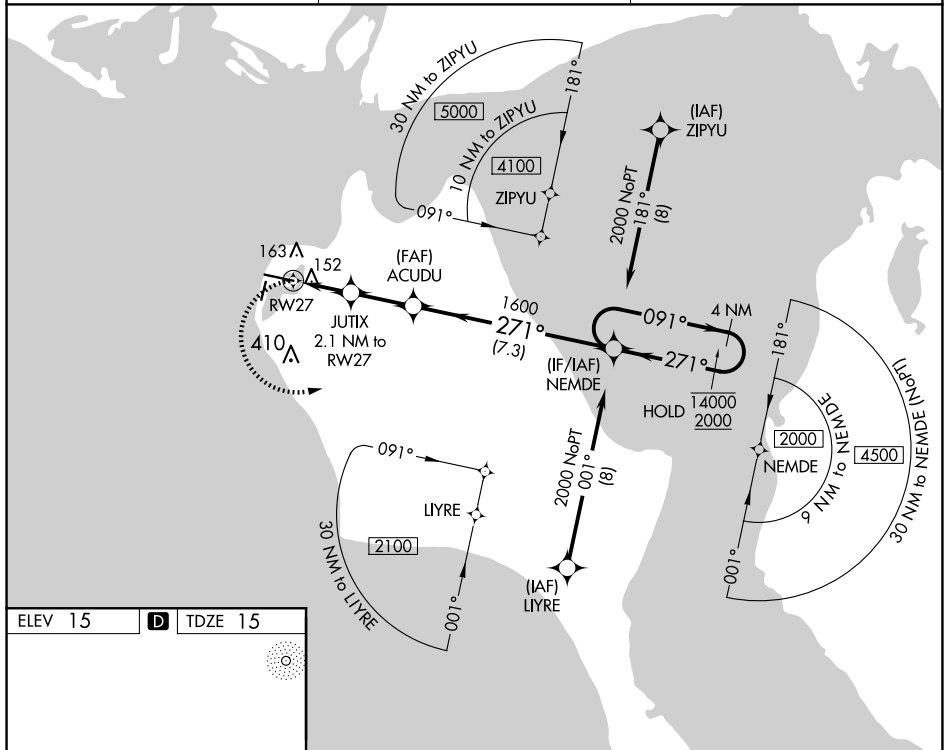
# RNAV (GPS) RWY 27

RNP APCH.

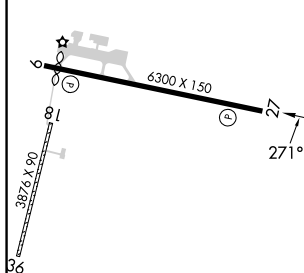

**T** Circling Rwy 18, 36 NA at night. Rwy 27 helicopter visibility reduction  
**A** below 1 SM NA. Straight-in Rwy 27 NA at night, Circling Rwy 27 at  
night, operational VGSI required, remain on or above VGSI glidepath  
until threshold.

**MISSED APPROACH:** Climbing left turn to 2000 direct NEMDE and hold.

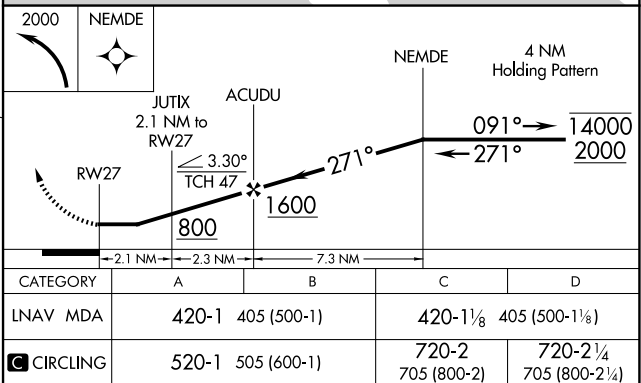
AFIS <b>135.45</b>	ANCHORAGE CENTER <b>119.2 263.0</b>	KOTZEBUE RADIO <b>123.6 (CTAF) 0</b>
-----------------------	--	---



ELEV 15	<b>D</b>	TDZE 15
---------	----------	---------

REIL Rwys 9 and 27 **L**HIRE Rwy 9-27 

MIRL Rwy 18-36 L



KOTZEBUE, ALASKA

Orig-C 03JAN19

RALPH WIEN MEML (OTZ) (PAOT)

RNAV (GPS) RWY 27

66°53'N-162°36'W

AK, 12 JUN 2025 to 07 AUG 2025