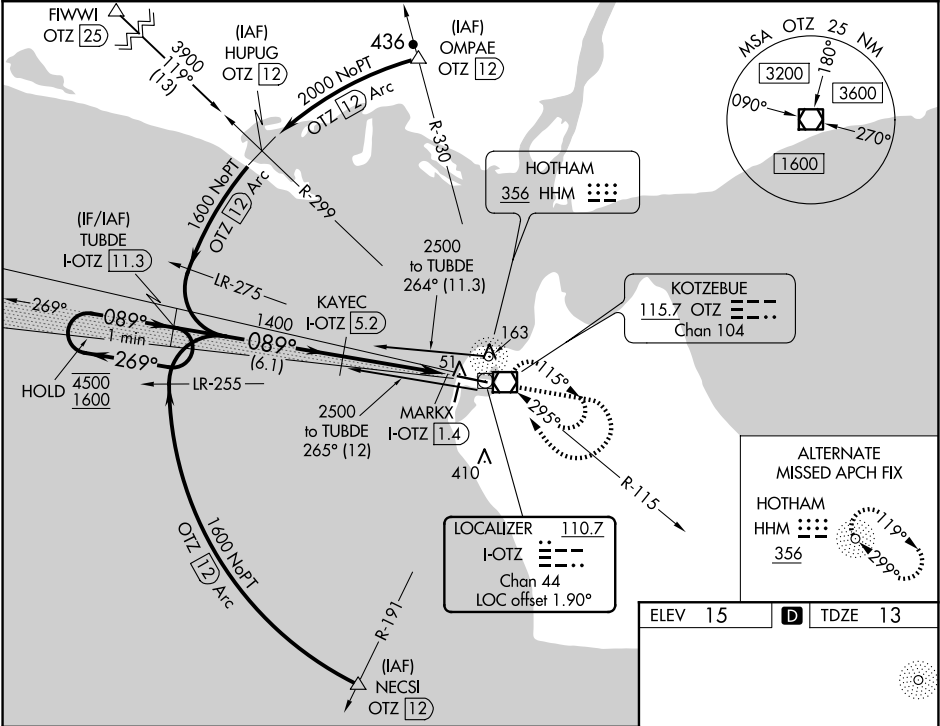


|               |         |          |      |
|---------------|---------|----------|------|
| LOC/DME I-OTZ | APP CRS | Rwy Idg  | 5900 |
| 110.7         | 089°    | TDZE     | 13   |
| Chan 44       |         | Apt Elev | 15   |

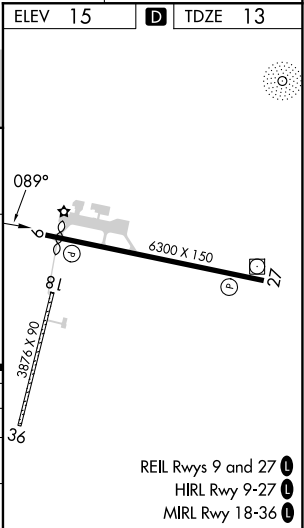
ILS or LOC RWY 9  
RALPH WIEN MEML (OTZ) (PAOT)

|  |  |
|--|--|
| DME required.  | MISSED APPROACH: Climb to 1700 then climbing right turn to 2000 direct OTZ VOR/DME and hold, continue climb-in-hold to 2000. |
| <p>⚠ Circling Rwy 18, 36 NA at night, Circling Rwy 27 at night, operational VGSI required, remain on or above VGSI glidepath until threshold. Rwy 9 helicopter visibility reduction below RVR 4000 NA.</p> |  |

|                |                                 |                                  |
|----------------|---------------------------------|----------------------------------|
| AFIS<br>135.45 | ANCHORAGE CENTER<br>119.2 263.0 | KOTZEBUE RADIO<br>123.6 (CTAF) 0 |
|----------------|---------------------------------|----------------------------------|



|   |        |             |                      |                        |
|---|--------|-------------|----------------------|------------------------|
| VGSI and ILS glidepath not coincident (VGSI Angle 3.00/TCH 43). |        |             |                      |                        |
| One Minute Holding Pattern                                      |        |             |                      |                        |
| 4500 ← 269° 089° → 1600   |        |             |                      |                        |
| GS 3.00° TCH 38   |        |             |                      |                        |
| Use I-OTZ DME when on the localizer course.                     |        |             |                      |                        |
| 6.1 NM 3.4 NM 0.4 0.4   |        |             |                      |                        |
| CATEGORY  | A      | B           | C                    | D                      |
| S-ILS 9   | 263/50 |             | 250 (300-1)          |                        |
| S-LOC 9   | 320/55 | 307 (400-1) | 320/50               | 307 (400-1)            |
| CIRCLING  | 520-1  | 505 (600-1) | 720-2<br>705 (800-2) | 720-2¼<br>705 (800-2¼) |



AK, 12 JUN 2025 to 07 AUG 2025

AK, 12 JUN 2025 to 07 AUG 2025