

WAAS CH <b>50539</b> <b>W22A</b>	APP CRS <b>221°</b>	Rwy ldg TDZE <b>447</b> Apt Elev <b>447</b>
--	------------------------	---

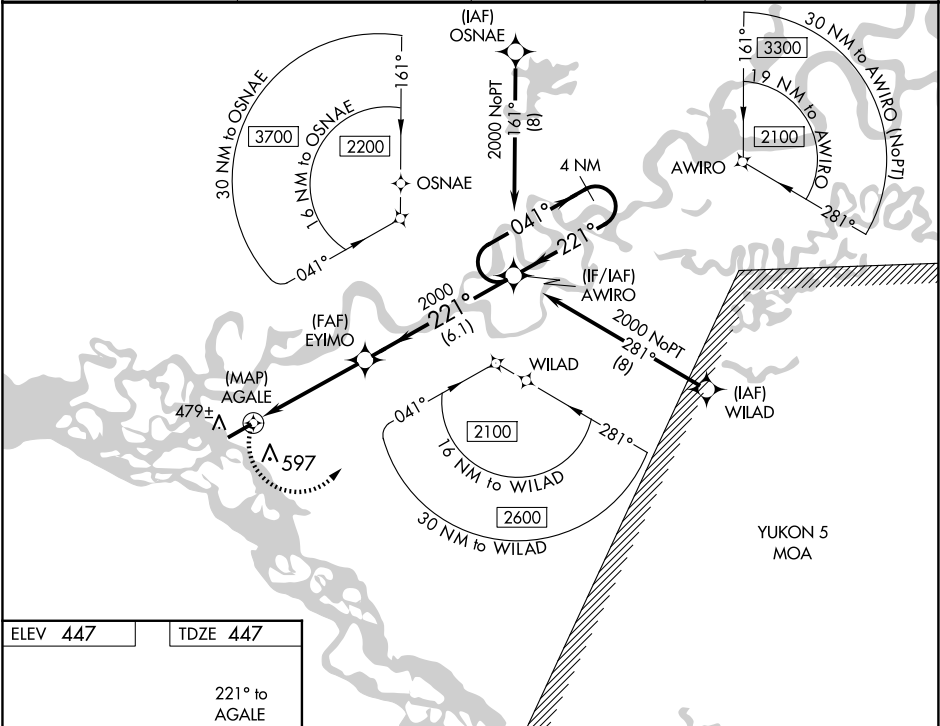
**RNAV (GPS) RWY 22**  
FORT YUKON (FYU) (PFYU)

**▼** Inop table does not apply to LPV or LNAV/VNAV all Cats. For uncompensated Baro-VNAV systems, LNAV/VNAV NA below -20°C (-4°F) or above 54°C (130°F). Circling NA southeast of Rwy 4 and 22. DME/DME RNP-0.3 NA. Rwy 22 helicopter visibility reduction below ¾ SM NA. For inop ALS, increase LNAV Cat C and D visibility ½ SM

**MALSF**

**MISSED APPROACH:**  
Climbing left turn to 2000 direct AWIRO and hold.

AWOS-3P <b>125.8</b>	ANCHORAGE CENTER <b>135.0 225.4</b>	FAIRBANKS RADIO <b>122.05</b>	CTAF <b>122.5 0</b>
-------------------------	--	----------------------------------	------------------------



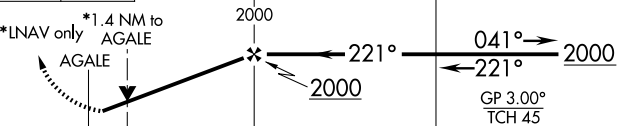



ELEV **447**      TDZE **447**

221° to AGALE

5000 x 100

MIRL Rwy 4-22 **0**

				VGSI and RNAV glidepath not coincident (VGSI Angle 3.00/TCH 27).		4 NM Holding Pattern	
							
CATEGORY		A		B		C	
LPV DA				697-1		250 (300-1)	
LNAV/VNAV DA				716-1		269 (300-1)	
LNAV MDA		960-1		513 (600-1)		960-1¼ 513 (600 1¼)	
 CIRCLING		960-1		513 (600-1)		960-1½ 513 (600-1½) 1000-2 553 (600-2)	

AK, 12 JUN 2025 to 07 AUG 2025

AK, 12 JUN 2025 to 07 AUG 2025