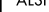
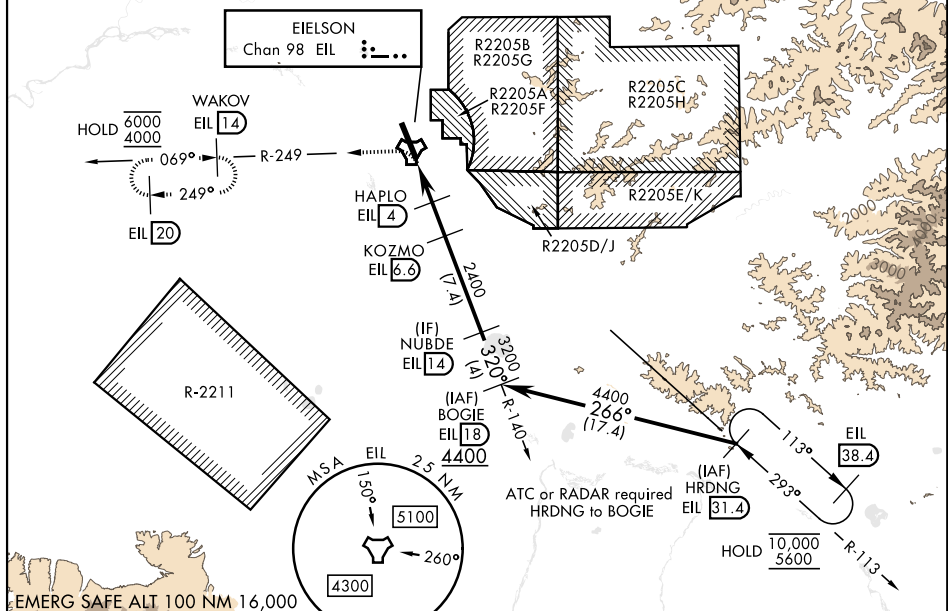


TACAN Y RWY 32

TACAN EIL Chan <b>98</b>	APCH CRS <b>320°</b>	Rwy Idg <b>14,530</b> TDZE <b>548</b> Arpt Elev <b>548</b>	AL-1729 [USAF]	EIELSON AFB (PAEI)	
<b>▼</b> * When ALS inop, increase CAT AB RVR to 55, vis to 1 mile; CAT CDE vis to 1 1/8 miles. <b>**</b> Circling not authorized E of Rwy 14-32.			ALSF-1 	MISSED APPROACH: Climbing left turn on EIL R-249 to 4000 to WAKOV and hold. Continue climb-in-hold.	
ATIS ★ <b>119.9 273.5</b>	FAIRBANKS APP CON <b>127.1 251.1 360° - 179°</b> <b>125.35 363.2 180° - 359°</b>		TOWER ★ <b>127.2 352.05</b>	GND CON <b>121.8 275.8</b>	CLNC DEL <b>343.7</b>

Missed approach requires the use of RNAV or ATC RADAR monitoring.  
CAUTION: Uncontrolled airspace below 700' AGL outside EIL CLASS D.



**HIRL Rwy 14-32**

Runway: 14,530 x 150

Side View: Runway profile showing elevation and distance markers.

CATEGORY	A	B	C	D	E
S-32 *	1040/24 492 (500-1/2)		1040/50 492 (500-1)		
CIRCLING **	1040-1 492 (500-1)		1040-1 1/2 492 (500-1 1/2)	1280-2 1/4 732 (800-2 1/4)	1280-2 1/2 732 (800-2 1/2)

FAIRBANKS, ALASKA

64° 40' N-147° 06' W

EIELSON AFB (PAEI)

Orig 15JUN23

TACAN Y RWY 32

AK, 12 JUN 2025 to 07 AUG 2025