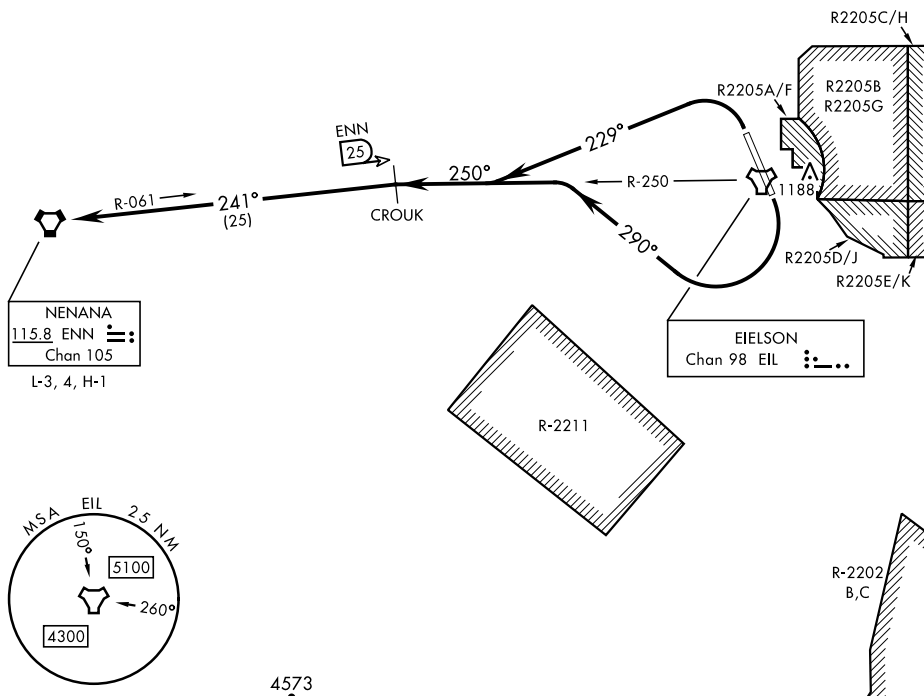


NENANA SIX DEPARTURE (NENNA6•ENN)

AL-1729 [USAF]

CAUTION: Mountainous terrain
East of Eielson AFB and South
of departure route.



DEPARTURE ROUTE DESCRIPTION

TAKEOFF RWY 14: Turn right heading 290° to intercept EIL TACAN R-250 outbound to CROUK and climb to assigned altitude, thence...

TAKEOFF RWY 32: Turn left heading 229° to intercept EIL TACAN R-250 outbound to CROUK and climb to assigned altitude, thence...

...intercept ENN VORTAC R-061 inbound to NENANA then via assigned route.

AK, 12 JUN 2025 to 07 AUG 2025